

A FUN-FILLED BOOKLET OF MAJOR CITY AND SPECIAL EVENT PACKAGES



# City Escapes! 2010

# CITY PACKAGES AND SPECIAL EVENTS

NEW YORK • BROADWAY SHOW PACKAGES • WASHINGTON DC • BOSTON  
NEW ORLEANS • BRANSON • NASHVILLE • PHILADELPHIA • MEMPHIS • LOS ANGELES  
SAN DIEGO • SAN FRANCISCO • SEATTLE • WILLIAMSBURG • NIAGARA FALLS  
DOLLYWOOD • MARDI GRAS • JAZZ FEST • ESSENCE MUSIC FESTIVAL • ROSE PARADE  
ROSE BOWL • DAYTONA 500 • INDY 500 • KENTUCKY DERBY • US OPEN TENNIS  
SUGAR BOWL & NEW YEAR'S EVE IN NEW ORLEANS • PRO FOOTBALL CHAMPIONSHIP GAME  
CHERRY BLOSSOM PARADE • THANKSGIVING & CHRISTMAS SEASON PACKAGES  
IN NEW YORK CITY, BRANSON AND NASHVILLE • COUNTRY MUSIC FESTIVAL • CANADA



NEW YORK



WASHINGTON DC



BOSTON



NASHVILLE



NEW ORLEANS



BRANSON



SAN FRANCISCO



LOS ANGELES



SAN DIEGO



MEMPHIS



NIAGARA FALLS



ROSE PARADE

PRE-PLANNED PACKAGES FOR INDEPENDENT OR GROUP TRAVEL

# City Escapes! <sup>SM</sup>

## City Escape Holidays

Many thanks for letting us share our City Packages & Special Event Packages with you. At City Escape Holidays, we have recently consolidated our various tour brochures into this convenient booklet format. We are hopeful that in these pages, you will find a perfect long weekend escape, one week vacation trip, Holiday Season getaway or that special event you have always dreamed of attending.

Most importantly, thanks for booking with your professional travel agent. As you may know, our brochures and products are only available through the 25,000 travel agencies around the USA and Canada. We have partnered with them to provide you with a wide variety of land-only travel packages from which to select your next well-deserved escape.

## Providing Consumer Confidence

City Escape Holidays is a proud member of the National Tour Association and the highly-regarded American Society of Travel Agents Tour Operator Program. Your travel agent will explain the importance of traveling with an NTA and ASTA TOP tour operator. In addition we carry a two million dollar Errors and Omissions policy.



## Close Coordination with Your Professional Travel Planner

It has never been more important for you to visit a travel agent when planning your leisure travel. They can help you simplify, and make sense of, the many product choices in the marketplace. Your travel agent is your best source for hassle-free planning for any of our travel packages. They have traveled extensively and have most likely been to the destination you are planning to visit. They are professionally trained to give you the best possible attention to detail and thorough customer service. We will work with them to ensure that your weekend escape, special event trip or complete vacation will be one to remember.



## About Our Packages

### For Independent or Group Travel

Some folks prefer to travel on their own and others would rather travel with a group. Either way, we have you covered. We handle lots of individuals, but also groups of all sizes for clubs and organizations, to all of our destinations. We are happy to customize all group programs.

### Excellent Selection of Hotels

Our packages are suited to every budget and our hotel choices in each category represent outstanding value. We have hand-picked the hotels you would most enjoy staying in...clean, comfortable and close to sights and attractions. All our hotels are ranked three, four or five stars.

### Exciting Activities

In each of our cities, we have a variety of features to keep you busy. Included are sightseeing tours, well-known restaurants, museums, attractions and points of interest. Last but not least are our entertainment packages with tickets to top shows in New York, Branson and Nashville.

### Plan Your Own Tour/Combine Destinations

Our packages allow flexibility. Our "Choose Your Own Features"<sup>SM</sup> Vouchers let you select the tours you want after arrival. The land-only nature of our packages lets you combine other cities in our product line and with the help of your travel agent you can drive, fly, or take the train between destinations.

### We Can Customize Your Plan

If you don't see a plan that is just right for you, we will work with your travel agent to provide exactly what you want. Any package we offer can be modified. We want you to have it your way!

### Easy to Understand Documents

Whether the package you have selected includes an attraction admission, show, sightseeing tour or dinner, our vouchers are easy to read and easy to understand. In many cases, you can select the feature of your choice after arrival at your destination. A complete description of each feature or tour is included in your document packet to help you plan your program and make your choices.

### Trip Protection Plan

**TRAVEL GUARD INTERNATIONAL** Protect your package investment. For a nominal cost, we can insure you against cancellation fees that may occur after your booking is confirmed; this also covers trip interruptions and other situations after travel has commenced. These insurance premiums are payable with deposit or final payment. Rates for trip protection on City Packages and Special Event Packages are available on request. See back page for complete details.

# Our Product Line-Up

Introduction .....	2-3
<b>CITY PACKAGES</b>	
Boston .....	8
Branson .....	10-11
Dollywood.....	12
Los Angeles.....	16
Memphis.....	16
Montreal .....	17
Nashville.....	12-13
New Orleans.....	14
New York.....	4-7
Niagara Falls .....	17
Philadelphia.....	16
Quebec City.....	17
San Antonio.....	16
San Diego.....	16
San Francisco .....	15
Seattle .....	16
Toronto .....	17
Vancouver .....	17
Victoria .....	17
Washington DC .....	9
Williamsburg.....	9

## SPECIAL EVENTS

Baseball All Star Game - Anaheim .....	21
BCS College Championship Football Game ..	20
Branson Christmas.....	22
Cherry Blossom Festival .....	22
Country Music Festival.....	23
Daytona 500.....	20
Elvis Week in Memphis .....	23
Essence Music Festival.....	21
French Quarter Festival.....	21
Indy 500.....	20
Jazz Fest.....	21
Kentucky Derby.....	20
Mardi Gras.....	21
Nashville Country Christmas .....	22
New Year's Eve in Times Square .....	22
Pro Football Championship Game .....	20
Shoppers Weekends in NYC.....	22
Sugar Bowl & New Year's Eve - New Orleans..	21
Rose Bowl Game/Rose Parade .....	18-19, 20
Thanksgiving in NYC.....	22
U.S. Open Tennis .....	23
General Info & Conditions .....	23-24

## Nature of Our Packages

Our City Packages and Special Events programs are very flexible and cater to a wide range of customers: Couples, Families, Singles, Young, Middle-aged and Mature. Here is a description:

**Sold Exclusively through Travel Agencies.** Your best source for expert travel planning.

**Independent Travel.** Specifically geared to customers who wish to do "their own thing" on their trip.

**Group Travel.** We handle groups of all sizes, but specialize in mini-groups! We will be pleased to work with your travel planner to set up a program for your group or organization.

**Any Length of Stay.** "Arrive any day and stay as long as you want," beginning with a two night minimum; Extra Nights are always available and are shown throughout this booklet.

**Variety of Plans.** Each length of stay has more than just one plan; for example, in New York, we have five different 3-night plans, each with a different grouping of included features.

**Land Only.** We let your travel agency take care of the air, but we handle all the ground arrangements. Airfares change, but our published rates do not. You can count on our rates being accurate.

**Mix/Match.** Our packages are like modules, allowing customers to easily combine two or more cities.

**Moderate to Deluxe Product.** No budget hotels. Our packages consist of mid-range to upscale hotels.

**Well-known Hotels.** We mainly sell the brands you have heard of: Hilton, Holiday Inn, InterContinental,

DoubleTree, Crowne Plaza, Marriott, Radisson, Omni, Hampton Inn, Westin and Sheraton.

**Well-known Restaurants.** Such as Brennan's and Commander's Palace in New Orleans; Sardi's and Gallagher's Steakhouse in New York; and the Old Ebbitt Grill in Washington DC.

**Great Sightseeing.** Gray Line is our primary sightseeing tour vendor, but we also work with some independent companies to bring you the most comprehensive and informative tours in each city.

**Exciting Activities.** Such as the top museums in New York, the Natchez Riverboat in New Orleans, Muir Woods in San Francisco, San Diego Zoo, Graceland in Memphis and Universal Studios in LA.

**Entertainment.** We can book any Broadway Show in New York, including The Rockettes at holiday-time; plus Nashville's Grand Ole Opry, as well as the top shows in Branson. Best available seats!

**Multiple Selection Vouchers.** Many of our packages consist of vouchers from which you can select the feature of your choice, after arrival; this way you can custom-design your own program.

**Package Modification.** If in our extensive package offerings, you still do not see what you want, we are pleased to custom-design a program to suit you!

**Informative Web-sites.** [www.cityescapes.com](http://www.cityescapes.com) – Our electronic brochure, with all our products, is just a few clicks away! Also check [www.speialeventpackages.com](http://www.speialeventpackages.com) for details about festivals and sports packages.

# NEW YORK

Your Tour Package Includes the Following Number of Selections from Each Activity Group. Please see page 5 for all package rates.

PLAN	HOTEL NIGHTS	# OF SELECTIONS FROM ACTIVITY GROUPS					STAGE DELI	EFF. DATES
		I	II	III	IV	V		
2A	2 nights hotel & tax	1	0	0	0	0	0	1/1-12/31
2B	2 nights hotel & tax	0	0	0	0	1	0	1/1-12/31
3A	3 nights hotel & tax	0	1	1	0	1	0	1/1-12/31
3B	3 nights hotel & tax	0	0	0	0	2	0	1/1-12/31
3C	3 nights hotel & tax	0	0	1	1	1	1	1/1-12/31
3D	3 nights hotel & tax	1	1	0	1	1	1	1/1-12/31
3S	3 nights hotel & tax	0	1	0	0	0	0	1/1-12/31
4A	4 nights hotel & tax	0	1	2	1	1	1	1/1-12/31
4B	4 nights hotel & tax	0	0	0	0	3	0	1/1-12/31
4C	4 nights hotel & tax	0	0	1	0	2	1	1/1-12/31
4D	4 nights hotel & tax	1	1	1	4	1	1	1/1-12/31
5A	5 nights hotel & tax	1	1	2	3	2	0	1/1-12/31
5B	5 nights hotel & tax	0	0	0	0	4	0	1/1-12/31
6A	6 nights hotel & tax	1	1	3	1	3	1	1/1-12/31
7A	7 nights hotel & tax	1	1	4	2	4	1	1/1-12/31
7B	7 nights hotel & tax	0	1	3	0	5	1	1/1-12/31

## FEATURES ACTIVITY GROUPS

### GROUP I - SIGHTS

- Uptown Loop
- Downtown Loop
- Night Loop
- Sightseeing Cruise
- Sunset Lights Cruise
- Holiday Lights Tour
- Woodbury Shopping Outlet

### GROUP II - SIGHTS

- All Loops Hop-on/Hop-off Tour
- #AL - (2 days) See loops in Group I

#### Group II Add-Ons

- #AL Tour + Statue of Liberty, Ellis Island (\$16) = ALS Tour
- #AL Tour + Statue of Liberty, Ellis Island, Empire State Building (\$35) = ENS Tour
- Three-day Hop-on/Hop-off Tour + your choice of 3 sightseeing attractions (\$40) = FSNY3 Tour

PLEASE SEE PAGE 6 FOR ALL SIGHTSEEING DESCRIPTIONS

#### ROUNDRIP AIRPORT TRANSFERS PER PERSON:

JFK – \$40 Newark – \$40 LaGuardia – \$36

### GROUP III - DINNERS

- Ristorante Domenico
- Sardi's
- The View (atop Marriott)
- Gallagher's Steakhouse

### GROUP IV - CULTURE

- Metropolitan Museum of Art
- Guggenheim Museum
- Museum of Natural History
- Lincoln Center
- Museum of Modern Art

### GROUP V - ENTERTAINMENT

- Broadway Show - Guaranteed Orchestra or Front Mezzanine (See page 7 for list of shows)
- Rockettes Christmas Spectacular
- Yankees Baseball Game
- New York City Opera

### OPTIONAL SIGHTSEEING

Requires advance reservations at time of booking.

**Niagara Falls by Air #NF:** Adult or Child \$429. Daily, all year. (A fee will be charged if cancelled less than 8 days prior to tour date.)

**Manhattan Comprehensive with Lunch #MC:** Adult \$89 Child \$65. Can be used to upgrade Group II Sightseeing. Add \$50 Adult/\$35 Child. Daily, all year.

**Show Biz Insiders Tour #SI:** Adult or Child \$69. Can be used to upgrade Group II Sightseeing. Add \$30 Adult or Child. Tue, Thu, Fri and Sat all year.

### Three Nights "Simply Sights" 3 Nights Hotel and tax, plus:

**PLAN 3S** Our Simply Sights three nighter is for those who only want hotel accommodations and a 2-day Hop-on/off tour of New York City, leaving time for personal activities. See page 5 for prices and see page 6 for Sightseeing Tour descriptions.

### YANKEES BASEBALL

See your favorite team play the Yankees in their new stadium. Game tickets may be added to any plan.



CROWNE PLAZA TIMES SQUARE



EDISON



MARRIOTT MARQUIS



SHERATON NEW YORK



STAYBRIDGE SUITES



W TIMES SQUARE



WELLINGTON



WESTIN TIMES SQUARE

Visit [www.cityescapes.com](http://www.cityescapes.com) for hotel descriptions

RATES PER PERSON		DATES and SEASON		2 NTS - 2A			2 NTS - 2B			3 NTS - 3S			OTHER 3 NTS			4 NTS			5 NTS			6 NTS			7 NTS			EXTRA NIGHTS		
HOTEL	CODE	SGL	DBL	TPL	SGL	DBL	TPL	SGL	DBL	TPL	SGL	DBL	TPL	SGL	DBL	TPL	SGL	DBL	TPL	SGL	DBL	TPL	SGL	DBL	TPL	SGL	DBL	TPL		
CROWNE PLAZA TIMES SQUARE	1/2-3/31, 7/1-9/6 L	699	425	375	849	575	525	1029	609	535	1389	969	895	1889	1325	1225	2399	1689	1565	3019	2165	2015	3659	2659	2485	288	144	115		
	4/1-6/30, 12/21-12/28 M	829	495	419	979	645	569	1219	709	595	1579	1069	955	2139	1455	1305	2709	1849	1665	3389	2355	2135	4089	2879	2625	348	174	136		
	9/7-12/20 H	895	535	445	1045	685	595	1315	765	635	1675	1125	995	2265	1525	1355	2865	1935	1725	3575	2455	2205	4299	2995	2705	376	188	147		
EDISON	1/2-3/31, 7/1-9/6 L	665	399	345	815	549	495	979	579	495	1339	939	855	1825	1289	1175	2319	1649	1505	2925	2119	1945	3549	2609	2405	274	137	107		
	4/1-6/30, 12/21-12/28 M	689	419	359	839	569	509	1019	599	515	1379	959	875	1879	1315	1199	2389	1679	1535	3009	2155	1979	3649	2649	2445	288	144	111		
	9/7-12/20 H	735	455	375	885	605	525	1085	639	535	1445	999	895	1965	1365	1225	2495	1739	1565	3135	2225	2015	3795	2729	2485	308	154	116		
MARRIOTT MARQUIS	1/2-3/31, 7/1-9/6 L	829	495	409	979	645	559	1219	709	585	1579	1069	945	2139	1455	1289	2709	1849	1645	3389	2355	2109	4089	2879	2595	348	174	132		
	4/1-6/30, 12/21-12/28 M	895	519	435	1045	669	585	1315	749	619	1675	1109	979	2265	1509	1335	2865	1919	1699	3575	2439	2175	4299	2979	2669	376	188	142		
	9/7-12/20 H	1129	645	509	1279	795	659	1659	935	729	2019	1295	1089	2719	1755	1479	3429	2225	1879	4249	2799	2389	5089	3395	2919	490	245	180		
SHERATON NEW YORK	1/2-3/31, 7/1-9/6 L	735	445	385	885	595	535	1075	635	545	1435	995	905	1945	1355	1235	2465	1725	1575	3095	2205	2025	3745	2705	2495	298	149	120		
	4/1-6/30, 12/21-12/28 M	769	469	399	919	619	549	1129	669	565	1489	1029	925	2019	1399	1259	2559	1779	1605	3209	2269	2059	3879	2779	2535	320	160	124		
	9/7-12/20 H	915	549	455	1065	699	605	1345	785	645	1705	1145	1005	2305	1555	1365	2915	1975	1735	3635	2499	2215	4375	3045	2715	390	195	150		
STAYBRIDGE SUITES	1/2-3/31, 7/1-9/6 L	645	379	345	795	529	495	929	545	495	1289	899	855	1745	1235	1175	2209	1579	1499	2785	2035	1935	3379	2509	2395	244	122	105		
	4/1-6/30, 12/21-12/28 M	735	445	389	885	595	539	1075	635	555	1435	995	915	1945	1355	1249	2465	1725	1595	3095	2205	2049	3745	2705	2525	298	149	122		
	9/7-12/20 H	829	495	425	979	645	575	1219	709	605	1579	1069	965	2139	1455	1315	2709	1849	1675	3389	2355	2145	4089	2879	2635	348	174	138		
W HOTEL TIMES SQUARE	1/2-3/31, 7/1-9/6 L	799	485	409	949	635	559	1169	689	579	1529	1049	939	2069	1425	1279	2619	1809	1629	3279	2305	2089	3959	2819	2569	328	164	130		
	4/1-6/30, 12/21-12/28 M	829	495	419	979	645	569	1215	709	595	1575	1069	955	2135	1455	1305	2705	1849	1665	3385	2355	2135	4085	2879	2625	346	173	136		
	9/7-12/20 H	1099	639	515	1249	789	665	1615	919	735	1975	1279	1095	2665	1729	1485	3365	2189	1885	4175	2759	2395	4999	3349	2925	476	238	178		
WELLINGTON	1/2-3/31, 7/1-9/6 L	699	425	385	849	575	535	1029	609	555	1389	969	915	1889	1325	1255	2399	1689	1599	3019	2165	2059	3659	2659	2535	288	144	125		
	4/1-6/30, 12/21-12/28 M	759	459	399	909	609	549	1119	659	575	1479	1019	935	2009	1389	1285	2549	1769	1645	3199	2259	2115	3869	2769	2605	320	160	136		
	9/7-12/20 H	829	495	435	979	645	585	1219	709	625	1579	1069	985	2139	1455	1345	2709	1849	1715	3389	2355	2195	4089	2879	2695	348	174	146		
WESTIN TIMES SQUARE	1/2-3/31, 7/1-9/6 L	829	495	419	979	645	569	1215	709	595	1575	1069	955	2135	1455	1305	2705	1846	1665	3385	2355	2135	4085	2879	2625	346	173	136		
	4/1-6/30, 12/21-12/28 M	855	509	429	1005	659	579	1255	729	609	1615	1089	969	2185	1479	1319	2765	1879	1679	3455	2389	2149	4165	2919	2639	360	180	140		
	9/7-12/20 H	1075	625	499	1225	775	649	1575	895	715	1935	1255	1075	2605	1695	1459	3285	2145	1855	4075	2705	2359	4885	3285	2885	460	230	173		

Season Codes: L=Low, M=Mid, H=High. Children under these ages are free in same room with parents: Crowne Plaza, Marriott, Sheraton, Westin and W Hotels 18; Staybridge Suites 12, Edison and Wellington - No Family Plans. Rates for children's features quoted at booking. Rate surcharges will apply over Special Event periods, including the United Nations General Assembly in late September, NYC Marathon in early November, and Holiday Season: Thanksgiving, Shoppers Weekends in early December and New Year's Eve.

## IMPORTANT INFORMATION

- **CHILDREN RATES** - See above for ages at which children are free in room with parents in existing beds. Children's Features Rates will be quoted at time of booking.
- **CHRISTMAS SHOPPER'S SEASON** - Thanksgiving to December 31 is New York's busiest time. New York is aglow with the sights and sounds of the Holiday Season. Our packages are available over this period, but space is limited and Holiday Season surcharges apply. Prices and availability will be quoted at time of booking. See page 6 for Holiday Season Packages.
- **HOTEL CHECK-IN/CHECK-OUT** - Generally check-in is no earlier than 3:00pm and check-out by 12 noon. This is the policy of the hotels, not City Escape Holidays and may differ from hotel to hotel.

- **FEATURE SELECTIONS** - Selections from our multiple choice vouchers may be made after arrival, with the exception of shows and optional add-ons, which you must select at time of booking.
- **SHOW CANCELLATIONS/THEATRE POLICIES** - Show cancellations are generally non-refundable. In most cases, especially with popular shows, theatres may impose fees, or full cost of ticket, regardless of when the cancellation occurs. We will advise theatres' policy, if requested, at time of booking.
- **EXTRA FEATURES** - Any item listed in the Features Groups can be purchased as Add-ons. Prices quoted at time of booking.
- **GROUP PACKAGES** - Your travel agent can book your group or organization on any of our packages. We can plan group activity functions, or prepare independent documents, so that each group member (or couple) can "do their own thing" after arrival; great for pre/post-cruise groups.

- **ROOM ALLOCATIONS** - When City Escape Holiday's room allocations are sold out, often we secure additional rooms, but they may be at a higher rate, based on the hotel's capacity pricing policy. If this is the case, we will advise your travel agent at time of booking. Rates for suite accommodations are available on request at all hotels.
- **ROLLAWAYS** - Cost for rollaways is not included in package rates. We suggest customers take care of this with the hotel directly.
- **SIGHTSEEING WITH GRAY LINE** - See page 6 for descriptions of all sightseeing tours. All tours can be purchased as optional add-ons if not included in your package.

# Gray Line New York Sightseeing



**Uptown Loop. Hop-on/Hop-off:** Stops include: Central Park, Lincoln Center, Theater District, Rockefeller Plaza, Radio City, Fifth Avenue, American Museum of Natural History, Cathedral of St. John the Divine, Apollo Theater, Harlem neighborhoods, Metropolitan Museum of Art, Guggenheim and other cultural points of Museum Mile.

**Downtown Loop. Hop-on/Hop-off:** Stops include: Empire State Building, Greenwich Village, SoHo, Little Italy, Chinatown, Ground Zero, Financial District, Battery Park (departure point for Statue of Liberty & Ellis Island), South Street Seaport, Times Square, Rockefeller Plaza, Radio City, United Nations, Fifth Avenue and more.

**Harlem Gospel Tour (Sundays):** Travel through a rich and diverse Harlem. See the famous Harlem Theater and attend an authentic church service.

**Night Loop:** NOT Hop-on/hop-off. Sightings include: Times Square, Empire State Building, Greenwich Village, SoHo, Chinatown and Little Italy, See the glittering lights of the "City that never sleeps." Includes a stop in Brooklyn for a great view of Manhattan.

**Manhattan Comprehensive (#MC):** The most complete tour of New York City, this 8-hour excursion covers Uptown, Downtown, Greenwich Village, Soho, Little Italy, Central Park, Mid-Manhattan, Fifth Ave., Rockefeller Center, a boat ride around the Statue of Liberty & Ellis Island. Includes lunch and admissions.

**Holiday Lights Tour:** From November 23 to January 6 only. NOT Hop-on/hop-off. Similar to the Night Loop, but features animated window displays and holiday decorations at New York's famous department stores, plus the giant tree at Rockefeller Center and other unique holiday sights.

**Woodbury Shopping Outlets:** Unescorted. Includes roundtrip transportation to Woodbury's Premium Outlets and a VIP Coupon Booklet for additional discounts. Woodbury is designed in a village motif with indoor stores and restaurants, shuttle trolley and 220 designer stores.

**All Loops (#AL): Hop-on/Hop-off.** Offers the best sights in Manhattan with Hop-on/hop-off service at over 50 stops and connecting transfer points to switch from one tour loop to another. Combines the Uptown Loop, Downtown Loop and Night Loop.

**All Loops Statue of Liberty (#ALS):** Includes All Loops, plus a boat ride to the Statue of Liberty and Ellis Island. Boat ride departs from Battery Park at the south tip of Manhattan every 20 minutes between 9:00am and 3:45pm in season; less frequently in winter. Plan on four hours to visit Statue and Ellis Island.

**Classic New York (#ENS):** Includes All Loops, Statue of Liberty/Ellis Island, PLUS admission to the Empire State Building Observation Deck or Top of the Rock.

**Freestyle New York (#FSNY3):** Includes All Loops Tour for three days plus choice of any three of the following: Statue of Liberty & Ellis Island, Empire State Building Observation Deck, World Trade Center Visitor Center, Top of the Rock, South Street Seaport Museum, 90-minute cruise, New York Skyride, Radio City Music Hall Tour, Museum of Natural History, Museum of the American Indian, Intrepid Sea, Air and Space Museum, and Madison Square Garden Tour.

# Holiday Season Packages



## THANKSGIVING PARADE

Plan 3R - Arrive November 24

■ **STAY:** 3 Nights  
 ■ **HOTEL:** Marriott Marquis, Crowne Plaza Times Square or Sheraton New York  
 ■ **FEATURES:** The Rockettes Christmas Show  
**ABOUT THE MACY'S THANKSGIVING DAY PARADE:** This is one of the very best family events available anywhere...and the best part is that it is free! This year's new route has the Parade marching down 7th Ave, instead of Broadway, but this is still right by our three hotels. Grandstand seating is not available. The Marriott and Crowne Plaza are on Broadway Avenue, a half-block from the parade route, where you can enjoy the parade from the sidewalk. The Sheraton is on 7th Avenue. Extra night rates quoted at time of booking.

**EXTRA ACTIVITIES:** Add dinners, sightseeing tours, additional shows and museum admissions; rates on request.

■ RATES PER PERSON				
HOTEL:	SGL	DBL	TPL	QD
Crowne Plaza	\$2249	1225	985	875
Marriott Marquis	1995	1125	895	NA
Sheraton New York	2095	1175	945	855



## SHOPPERS WEEKENDS

Plan 3R - Arrive December 2 or 9

■ **STAY:** 3 Nights  
 ■ **HOTEL:** Marriott Marquis, Crowne Plaza Times Square or Sheraton New York  
 ■ **FEATURES:** The Rockettes Christmas Show  
**ABOUT SHOPPERS WEEKENDS:** The period between Thanksgiving and the middle of December is one of the most special times to be in New York! The city embraces the holiday spirit in spectacular fashion, starting with the Macy's Thanksgiving Day Parade. The following week marks the lighting of the giant tree in Rockefeller Center. Then comes the first two weekends in December known as Shoppers Weekends, where both visitors and locals are out in force taking care of that Christmas list.

**EXTRA ACTIVITIES:** Add dinners, sightseeing tours, additional shows and museum admissions; rates on request.

■ RATES PER PERSON				
HOTEL:	SGL	DBL	TPL	QD
Crowne Plaza	\$2249	1225	985	875
Marriott Marquis	2375	1295	995	NA
Sheraton New York	2095	1175	945	855



## NEW YEAR'S EVE

Plan 3R - Arrive December 30

■ **STAY:** 3 Nights  
 ■ **HOTEL:** Marriott Marquis, Crowne Plaza Times Square or Sheraton New York  
 ■ **FEATURES:** One Broadway Show  
**ABOUT THE EVENT:** This is truly something you have got to see, up close and personal, a once in a lifetime experience! Our hotels are located in the heart of Times Square in the "Greatest City in the World." You literally walk out of all three hotels and into Times Square. Being in the heart of it all, you will be able to find a great position from which to watch the famous New Year's Ball drop, in the second leading up to midnight and the ringing in of the New Year!

**EXTRA ACTIVITIES:** Add dinners, sightseeing tours, additional shows and museum admissions; rates on request.

■ RATES PER PERSON				
HOTEL:	SGL	DBL	TPL	QD
Crowne Plaza	\$2449	1365	1095	975
Marriott Marquis	2435	1355	1055	NA
Sheraton New York	2155	1235	995	915

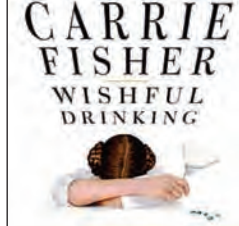
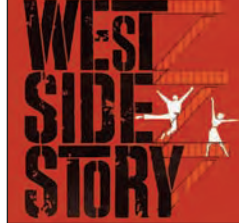
# CURRENT BROADWAY SHOWS

## TOP BROADWAY SHOWS

SHOWS MUST BE SELECTED AT TIME OF BOOKING

This is a partial list of shows we offer. Shows may close without notice. Packages include best available seating at time of booking, but are guaranteed to be Orchestra or Front Mezzanine! Evening or matinee performances. Nominal surcharges may apply for some shows due to price differences and increases. Off-Broadway is also available. Please visit [www.cityscapes.com](http://www.cityscapes.com) for current show list.

9 to 5 • Avenue Q • Fela! • Chicago • Rock of Ages • Billy Elliot  
 Spider-Man: Turn Off the Dark • Hair • La Cage aux Folles  
 Shrek the Musical • The Royal Family • In the Heights • Race  
 Jersey Boys • Mamma Mia! • Mary Poppins • Superior Donuts  
 Wintuk • Burn The Floor • South Pacific • Next to Normal  
 After Miss Julie • Oleana • Collected Stories • The Lion King  
 God of Carnage • The Little Mermaid • Ragtime • Memphis  
 Broadway Bound • Present Laughter • Wishful Drinking  
 Brighton Beach Memoirs • Time Stands Still • The 39 Steps



# BOSTON

Your Tour Package Includes the Following Number of Selections from Each Activity Group

PLAN	HOTEL NIGHTS	# OF SELECTIONS FROM ACTIVITY GROUPS				EFFECTIVE DATES
		I	II	III	IV	
2A	2 nights hotel & tax	1	0	0	0	1/1-12/31
3A	3 nights hotel & tax	2	0	1	0	4/1-10/26
3B	3 nights hotel & tax	1	1	0	0	5/1-10/26
3C	3 nights hotel & tax	0	1	0	1	5/1-10/26
4A	4 nights hotel & tax	3	0	1	0	5/1-10/26
4B	4 nights hotel & tax	1	1	0	1	5/1-10/26
4C	4 nights hotel & tax	0	2	1	0	5/1-10/26
5A	5 nights hotel & tax	1	2	0	1	6/1-10/26
5B	5 nights hotel & tax	1	3	0	0	6/1-10/26



BOSTON PARK PLAZA



INTERCONTINENTAL BOSTON



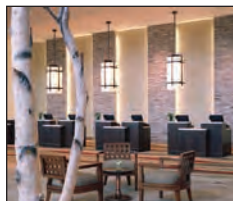
OMNI PARKER HOUSE



SHERATON BOSTON



WESTIN COPLEY PLACE



WESTIN WATERFRONT

Visit [www.cityescapes.com](http://www.cityescapes.com) for hotel descriptions

## FEATURES ACTIVITY GROUPS

### GROUP I

- **Cambridge, Lexington, Concord (#2)** 3.5 hrs. Operates: Sat and Sun only May 2-Jun 6. Daily Jun 17 - Oct 25.
- **Salem - Witch City (#5)** 4.75 hrs. Operates: Tue, Thu & Sat, Jun 2 - Oct 24, plus Halloween.
- **Beantown Trolley/ Freedom Trail and Harbor Cruise (#7)** Daily, Mar 1 - Dec 31, limited winter schedule from Jan 1 - Feb 28.
- **Wrentham Village Shopping Outlets (#12)** Daily, all year.
- **Lunch at Plaza III**

### GROUP II

- **Plimouth Plantation (#4)** All day. Operates: Mon, Wed & Fri, Jun 1 - Oct 23.
- **Cape Cod/ Provincetown (#6)** All day. Operates: Tue, Thu, Sat & Sun, Jun 1 - Sep 13.
- **Total Experience (#3)** 7 hrs. Operates: Sat & Sun only, May 2 - 31; Daily, Jun 6 - Oct 25. Combines Tour #2 in Group 1 with all major city sights.

- **Cape Cod in Autumn (#10)** All day. Operates: Tue, Thu, Sat & Sun, Sep 5 - Oct 25 only. Cruise admission included.
- **Newport (#9)** Duration: 8 hrs. Operates: Sun only, Jun 7 - Oct 25.
- **Fall Foliage Spectacular (#11)** 9 hrs. Operates: Daily, Sep 19 - Oct 25 only.
- **New England Seacoast (#8)** 9 hrs. Operates: Mon, Wed & Sat, Jun 8 - Oct 24. Massachusetts to Maine.
- **Dinner at Plaza III**

### GROUP III - Lunch

- **Plaza III**
- **Legal Seafoods**

### GROUP IV - Dinner

- **Legal Seafoods** (3 locations in Boston to choose from)

**IMPORTANT:** Carefully observe the sight-seeing tour dates of operation as you plan your trip. Some tours do not operate in the early and late part of the year.



HOTEL	DATES/SEASON	CODE	2 NTS			3 NTS			4 NTS			5 NTS			EXTRA NTS		
			SGL	DBL	TPL	SGL	DBL	TPL	SGL	DBL	TPL	SGL	DBL	TPL	SGL	DBL	TPL
BOSTON PARK PLAZA	4/1-9/10	M	\$669	405	345	1055	665	565	1375	849	725	1735	1065	905	280	140	108
	9/11-11/19	H	765	459	379	1185	729	609	1555	935	779	2005	1185	985	328	164	124
INTERCONTINENTAL HOTEL	4/1-9/10	M	765	459	409	1185	729	649	1555	935	835	2005	1185	1055	318	159	134
	9/11-11/19	H	965	559	479	1485	875	755	1945	1135	975	2505	1435	1209	418	209	167
OMNI PARKER HOUSE	4/1-9/10	M	705	425	365	1105	695	599	1445	885	769	1825	1105	959	296	148	118
	9/11-11/19	H	979	585	479	1515	905	745	2005	1175	959	2505	1475	1205	338	169	132
SHERATON BOSTON	4/1-9/10	M	669	405	345	1055	665	565	1375	849	725	1735	1065	905	280	140	108
	9/11-11/19	H	765	459	379	1185	729	609	1555	935	779	2005	1185	985	328	164	124
WESTIN COPLEY PLACE	4/1-9/10	M	805	479	399	1235	759	645	1615	975	829	2019	1219	1035	338	169	132
	9/11-11/19	H	965	569	469	1485	889	735	1945	1149	939	2445	1435	1185	424	212	162
WESTIN WATERFRONT	4/1-9/10	M	705	425	365	1105	695	599	1445	885	769	1825	1105	959	296	148	118
	9/11-11/19	H	859	505	419	1325	799	669	1735	1005	865	2245	1305	1085	364	182	142

\*IMPORTANT: Sightseeing is limited in early and late part of the year. See above for effective dates of each package and Gray Line tour dates. **Season Codes:** M=Mid; H=High. **Low Season:** 1/1-3/31 & 11/20-12/31 - Rates and package plan available on request. **Children:** Under 18 are free in same room with parents at all hotels except Omni Parker House, where the age is 17. Children's Features Rates available on request.

# WASHINGTON DC

Your Tour Package Includes the Following Number of Selections from Each Activity Group

PLAN	HOTEL NIGHTS	# OF SELECTIONS FROM ACTIVITY GROUPS			EFFECTIVE DATES
		I	II	III	
2A	2 nights hotel & tax	1	0	0	1/1-12/31
3A	3 nights hotel & tax	1	1	0	1/1-12/31
3B	3 nights hotel & tax	3	0	0	1/1-12/31
3C	3 nights hotel & tax	0	2	0	1/1-12/31
3D	3 nights hotel & tax	Cherry Blossom Parade-see below			4/8-4/11
4A	4 nights hotel & tax	2	1	1	1/1-12/31
4B	4 nights hotel & tax	4	0	1	1/1-12/31
4C	4 nights hotel & tax	1	2	1	1/1-12/31
5A	5 nights hotel & tax	4	1	1	1/1-12/31
5B	5 nights hotel & tax	2	2	1	1/1-12/31
5C	5 nights hotel & tax	1	3	1	1/1-12/31



CAPITAL HILTON



HOLIDAY INN CAPITOL



OMNI SHOREHAM



WASHINGTON HILTON



WILLARD INTERCONTINENTAL

## FEATURES ACTIVITY GROUPS

### GROUP I (Daily, except holidays)

- Open Top Hop-on/off Tour (OTC)\*
- Mount Vernon & Alexandria Tour (D)\*
- Washington After Dark Tour (L)\*
- A Taste of DC Tour (A)\*
- Lunch at Phillips Flagship Restaurant

### GROUP II

- Mt. Vernon/Alexandria/Arlington National Cemetery (VA) Daily\*
- DC in a Day Tour (DC) Daily, except Sun\*
- Monticello Tour (J) Wed, 3/22 - 11/1\*

- Gettysburg Tour (O) Mon, Thu, Sat, 3/22 - 9/6 & Mon only 9/7 - 11/1\*
- Spy City Tour (SPY) Sat only\*
- Dinner at Phillips Flagship Restaurant

### GROUP III

- Dinner at Old Ebbitt Grill
- Dinner at 1789
- Dinner at Clyde's of Georgetown

Tours do not operate on Thanksgiving, Christmas, New Year's Day. Tour #L does not operate July 4, Dec 24 or Dec 31.

### CHERRY BLOSSOM PARADE - Arrive 4/8/2010

**PLAN 3D** 3 nights hotel and tax at the Holiday Inn Capitol • Two day Gray Line Hop-on/Hop-off Open Top Coach Tour, with stops at all major national monuments and memorials, plus the Federal Triangle area • Reserved grandstand seat to the National Cherry Blossom Festival Parade, held Saturday, April 10, 2010

Rates Per Person	SGL	DBL	TPL	QD
	\$1255	675	555	485
Extra Nights	360	180	130	96

**IMPORTANT:** If you purchase a package that has a Group II selection, please advise your travel agent of your tour selection so we can pre-book it for you. All features in Groups I and III can be booked on your own, after arrival in the city. Also, please note that some tours in Group II are seasonal and only operate on certain days; this should be taken into consideration when planning your tour. Visits inside the White House are always subject to availability. \*Gray Line Tours do not operate on holidays.

Williamsburg - The perfect add-on to your Washington DC stay. From \$199 pp.

Optional Roundtrip Airport Transfers, pp:  
Reagan Nat'l - \$30 Dulles - \$54 BWI - \$54

Visit [www.cityscapes.com](http://www.cityscapes.com) for hotel descriptions



RATES PER PERSON HOTEL	DATES and SEASON	CODE	2 NTS			3 NTS			4 NTS			5 NTS			EXT. NTS		
			SGL	DBL	TPL	SGL	DBL	TPL	SGL	DBL	TPL	SGL	DBL	TPL	SGL	DBL	TPL
CAPITAL HILTON	1/1-2/28, 7/1-9/6	L	\$665	389	319	1069	659	555	1475	925	795	1635	1159	985	282	141	110
	3/1-6/30, 9/7-12/31	H	835	479	389	1315	785	639	1809	1095	899	2239	1369	1115	364	182	135
HOLIDAY INN CAPITOL*	1/1-2/28, 7/1-9/6	L	535	329	275	865	559	479	1195	795	689	1495	995	859	212	106	80
	3/1-6/30, 9/7-12/31	H	645	389	325	1039	649	545	1429	899	769	1769	1139	959	270	135	98
OMNI SHOREHAM	1/1-2/28, 7/1-9/6	L	459	285	239	765	499	429	1075	725	629	1345	905	785	180	90	68
	3/1-6/30, 9/7-12/31	H	519	325	269	849	555	475	1185	789	679	1485	985	845	208	104	77
WASHINGTON HILTON	1/1-2/28, 7/1-9/6	L	499	315	279	825	545	485	1145	779	685	1429	965	865	198	99	82
	3/1-6/30, 9/7-12/31	H	649	389	325	1039	649	545	1429	899	769	1769	1139	959	270	135	98
WILLARD**	1/1-2/28, 7/1-9/6	L	709	425	365	1125	695	609	1539	975	849	1929	1215	1059	298	149	118
	3/1-6/30, 9/7-12/31	H	775	465	395	1225	759	649	1669	1055	899	2089	1309	1125	330	165	128

Season Codes: H=High, L= Low Children: Free in same room with parents under these ages: Willard - 14; all other hotels - 18. Rates for children's features available on request. \*Ask about our Weekend Specials at the Holiday Inn Capitol. \*\*Rates shown for Willard are for stays Thu-Sun; for stays Mon-Wed, add per person per night: Single: \$140, Double \$70, Triple \$47.

# BRANSON

Your Tour Package Includes the Following Number of Selections from Each Activity Group

PLAN	HOTEL NIGHTS	# OF SELECTIONS FROM ACTIVITY GROUPS				EFFECTIVE DATES
		I	II	III	IV*	
2A	2 nights hotel & tax	1	0	0	1	3/1-12/20
2B	2 nights hotel & tax	2	0	0	0	3/1-12/20
3A	3 nights hotel & tax	2	1	1	1	3/1-12/20
3B	3 nights hotel & tax	3	1	1	0	3/1-12/20
3C	3 nights hotel & tax	4	1	0	0	3/1-12/20
4A	4 nights hotel & tax	3	2	1	1	3/1-12/20
4B	4 nights hotel & tax	4	2	1	0	3/1-12/20
4C	4 nights hotel & tax	2	3	0	1	3/1-12/20
7A	7 nights hotel & tax	7	2	1	1	3/1-12/20
7B	7 nights hotel & tax	6	5	0	0	3/1-12/20

\*The Group IV activity can be exchanged for a show.



BRANSON TOWERS - 1



COMFORT INN - 2



GRAND OAKS - 3



HAMPTON INN - 4



HILTON BRANSON LANDING - 5



RADISSON HOTEL - 7

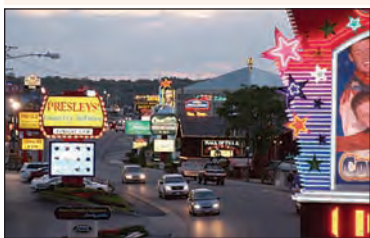
## FEATURES ACTIVITY GROUPS

### GROUP I - Shows

Branson has it all, as far as entertainment goes. From top-name performers like Shoji Tabuchi, Andy Williams, Jim Stafford, Yakov Smirnoff and Mickey Gilley to variety shows like The Baldknobbers and Presleys Jubilee, and numerous "tribute shows" and family shows, magic and even a circus! We promise you will be entertained every minute of your stay. See page 11 for some of the most popular shows; we can book any show you desire and get you the best seats available at time of booking!

### GROUP II - Dinners

- Moon River Grill
- McFarlain's
- Sadie's Smokehouse
- Montana Mike's Steakhouse
- Peppercorns
- Baldknobbers Country Restaurant



### GROUP III - Attractions

- Imax Film - Ozarks Legacy & Legend
- Titanic Museum
- Ripley's Believe-It-Or-Not Museum
- Lake Queen Sightseeing Cruise

### GROUP IV - Theme Parks

- Silver Dollar City
- Celebration City

### OPTIONAL ADD-ONS

- Branson Scenic Railway - \$24
- Ride the Ducks - \$18
- Veteran's Memorial Museum - \$10

**SHOW TRANSFERS:** Our packages do not include show transfers, but they are readily available at a nominal cost from the hotel. The Front Desk or Concierge Desk staff will be pleased to arrange transfers through a reliable taxi or van company; please check with them for your show transfer needs.

**AIRPORT TRANSFERS:** The closest major airport to Branson is Springfield, which is about 55 minutes north of Branson. We can provide transfers, for \$85.00 per person, roundtrip (minimum 2 people); for 1 person - \$170.00 roundtrip.

**Pigeon Forge/Dollywood - The perfect add-on to your Branson stay. Ask your travel agent for details and rates.**

Marriott Residence Inn is **6** on the map on page 11.

Visit [www.cityescapes.com](http://www.cityescapes.com) for hotel descriptions

HOTEL	RATES PER PERSON	DATES and SEASON	2 NTS			3 NTS			4 NTS			7 NTS			EXT. NTS			
			CODE	SGL	DBL	TPL	SGL	DBL	TPL	SGL	DBL	TPL	SGL	DBL	TPL	SGL	DBL	TPL
BRANSON TOWERS		3/1-12/20	Y	\$379	285	265	599	459	425	785	599	555	1265	949	865	110	55	43
COMFORT INN		3/1-5/21	L	379	279	265	599	459	419	785	595	539	1285	945	845	104	52	41
		5/22-12/20	H	439	309	275	689	499	449	899	655	589	1465	1035	915	128	64	48
GRAND OAKS		3/1-8/31	L	355	269	249	569	445	399	749	575	525	1199	899	799	86	43	31
		9/1-9/30	M	389	289	259	619	465	419	815	609	549	1299	969	859	102	51	36
		10/1-12/20	H	445	319	285	695	509	449	909	665	589	1455	1035	895	128	64	44
HAMPTON INN - 76 STRIP		3/1-5/31	L	449	309	275	715	505	449	929	665	589	1499	1059	915	136	68	48
		6/1-12/20	H	519	359	299	809	569	489	1055	745	645	1735	1185	995	168	84	59
HILTON BRANSON LANDING		3/1-3/31	L	485	335	315	765	539	509	999	699	655	1615	1115	1035	154	77	63
		4/1-12/20	H	615	395	365	939	629	569	1229	825	729	1995	1315	1155	198	99	79
MARRIOTT RESIDENCE INN**		3/1-3/31	L	409	295	265	659	485	445	859	635	579	1385	999	885	120	60	52
		4/1-12/20	H	519	359	319	809	569	499	1055	745	655	1735	1185	1015	168	84	62
RADISSON HOTEL BRANSON		3/1-3/31	L	385	295	259	609	465	419	795	599	545	1269	955	835	112	56	41
		4/1-12/20	H	485	335	289	765	539	469	999	699	609	1615	1115	949	154	77	54

1/1-2/28, 12/21-12/31: Rates and package plans available on request. **Season Codes:** Y=Year, H=High, L=Low, M=Mid. Christmas packages on request. **Children's Rates:** Children are free in same room with parents under 12 at Branson Towers, under 17 at Comfort Inn and under 18 at all other hotels. Children's features rates available on request. \*\*Marriott Residence room is a one bedroom suite with one bed in the bedroom and a pull-out sofa in the living room. Two bedroom suites are available at these add-on rates per person, per night: Single \$80, Double \$40, Triple \$30.

# GREAT BRANSON ENTERTAINMENT

These are just some of the nearly 100 shows we offer.  
 Visit us at [www.cityscapes.com](http://www.cityscapes.com) for a complete, current list.



SHOJI TABUCHI



JIM STAFFORD



MICKEY GILLEY



MOE BANDY



BALDKNOBBERS JAM



LEGENDS IN CONCERT



ANDY WILLIAMS



TONY ORLANDO



DOUG GABRIEL



SPIRIT OF THE DANCE



PRESLEYS' JUBILEE



HUGHES BROTHERS



YAKOV SMIRNOFF



OSMOND BROTHERS



PLATTERS



MEL TILLIS



COUNTRY TONITE



SHOWBOAT BRANSON BELLE



THE DUTTONS



'50S AT THE HOP



OAK RIDGE BOYS



GATLIN BROTHERS



THE HAYGOODS



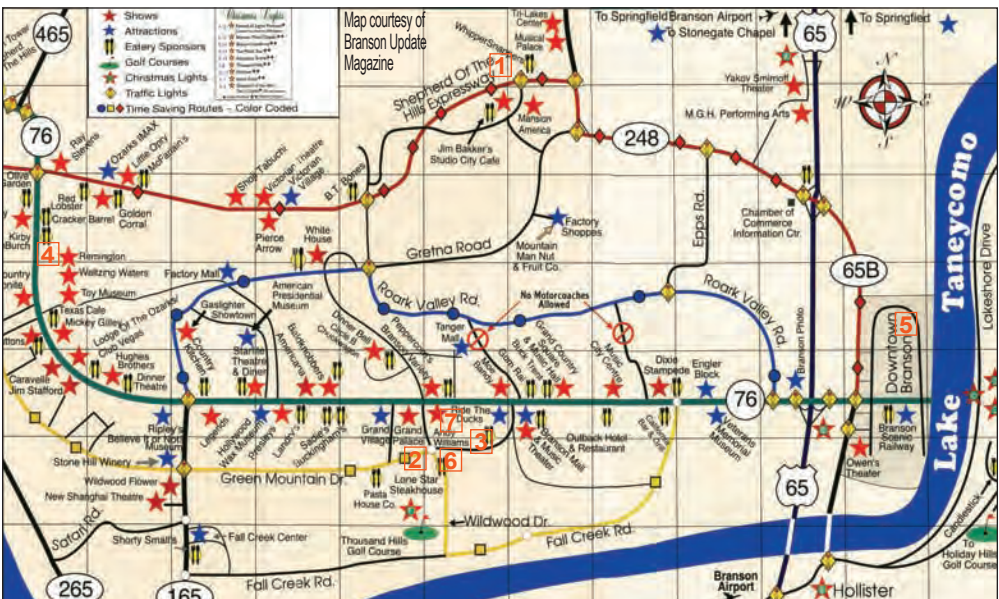
DANIEL O'DONNELL



DIXIE STAMPEDE

\*NOTE: At time of printing, performance dates for Super Star Shows had not been set. Their appearance dates should be set by February and information will be available on request. Performers appearances are always subject to change and based on availability.

Shows may close at any time. New shows open during the year and are available on request. Nominal surcharges may apply for some shows due to price differences. Other shows available on request. Show cancellations may not be refundable.



# NASHVILLE

Your Tour Package Includes the Following Number of Selections from Each Activity Group

PLAN	HOTEL NIGHTS	# OF SELECTIONS FROM			EFFECTIVE DATES
		GROUP I	GROUP II	OPRY*	
2A	2 nights hotel & tax	1	0	No	1/1-12/31
2B	2 nights hotel & tax	0	0	Yes	1/1-12/31
3A	3 nights hotel & tax	1	1	Yes	1/1-12/31
3B	3 nights hotel & tax	3	0	Yes	1/1-12/31
3C	3 nights hotel & tax	0	2	Yes	
3D	3 nights hotel & tax	Country Christmas-see below			11/21-12/25
4A	4 nights hotel & tax	3	1	Yes	1/1-12/31
4B	4 nights hotel & tax	1	2	Yes	1/1-12/31
4C	4 nights hotel & tax	0	3	Yes	1/1-12/31

\*Performance of the Grand Old Opry.



HOLIDAY INN EXPRESS-DOWNTOWN



MILLENNIUM MAXWELL HOUSE



OPRYLAND HOTEL



RADISSON OPRYLAND

Visit [www.cityescapes.com](http://www.cityescapes.com) for hotel descriptions

## FEATURES ACTIVITY GROUPS

### GROUP I

- Discover Nashville Tour Daily, 3.5 hours
- Stars' Homes Tour Daily, 3.5 hours
- Grand Legends Tour Daily, 3.5 hours
- Nashville Nights 7pm, Mon-Sat, 4.5 hours
- Jack Daniels Distillery Tour Tue, Thu, Sat, Apr 1 - Oct 31, 7 hours

### OPTIONAL FEATURE

- General Jackson Dinner Cruise - \$95 pp Daily, except Tue, Mar 15 - Dec 31, 6:30pm

### GROUP II

- Discover Nashville & Grand Legends Combo Tour Daily, 8 hours
- Discover Nashville & Stars' Homes Combo Tour Daily, 8 hours
- Historical Tour Daily, 4.5 hours
- General Jackson Showboat Cruise w/Lunch Apr 1 - Nov 30, Thu-Sun, 3 hours
- Civil War Battlefield Tour Mon, Wed, Fri, Apr 23-Nov 30

## A Nashville Country Christmas

Dates: November 21 - December 25, 2010

**3 NIGHTER PACKAGE INCLUDES:** Three nights hotel and tax at the Gaylord Opryland Hotel or Radisson Hotel Opryland • Ticket to Radio City Christmas Spectacular starring the world-famous Rockettes • Ticket to "Ice" at the Gaylord Opryland • Ticket to Louise Mandrell Christmas Dinner Show • Ticket to the Grand Ole Opry (Tue, Fri or Sat only) • Ticket to a General Jackson Breakfast or Lunch Cruise and Show (based on availability) • Ticket to "Treasures for the Holidays" - an Art, Antique and Craft Fair • Hall of Trees • All applicable taxes and gratuities



RATES PER PERSON	3 NIGHTS PLAN 3D			EXTRA NIGHTS				
	SGL	DBL	TPL	QD	SGL	DBL	TPL	QD
Opryland Hotel:								
Traditional Room	\$995	659	525	475	278	139	99	94
Garden View Room	1295	799	635	549	372	186	130	125
Radisson Opryland	845	599	529	519	152	76	62	57

Show cancellations may not be refundable.

Pigeon Forge/Dollywood - The perfect add-on to your Nashville stay. From \$199 per person.



Nashville Skyline



Country Music Hall of Fame

HOTEL	DATES and SEASON	CODE	2 NTS			3 NTS			4 NTS			EXT. NTS		
			SGL	DBL	TPL	SGL	DBL	TPL	SGL	DBL	TPL	SGL	DBL	TPL
HOLIDAY INN EXPRESS DOWNTOWN	1/1-12/31	Y	\$455	299	249	795	555	485	1025	719	619	166	83	62
MILLENNIUM MAXWELL HOUSE†	1/1-12/31	Y	415	275	235	739	535	469	945	679	595	148	74	54
OPRYLAND HOTEL Traditional Style Rooms	1/1-12/31	Y	679	399	345	1129	725	599	1469	945	769	278	139	99
OPRYLAND HOTEL Garden View Rooms	1/1-12/31	Y	879	509	399	1425	879	709	1855	1139	909	372	186	130
RADISSON OPRYLAND	1/1-12/31	Y	419	279	249	745	539	458	965	689	619	152	76	62

Season Codes: Y= All Year. Effective Dates - All packages are effective all year, however, please note Grand Ole Opry performance dates as you plan your package. Important: Rates shown above do not apply during the Country Music Festival in mid-June; see rates for the Festival in the Special Events section in this brochure. Children's Rates: Children under 18 are free in same room with parents at Holiday Inn Express and Millennium, they are free under age 12 at Opryland and Radisson hotels. †Free breakfast included at Millennium Maxwell House.

# NASHVILLE ENTERTAINMENT

**OPERATING DATES:** Be sure to note days of the week that Grand Ole Opry and other shows perform as you plan your package. There is something happening almost every evening of the week! Show cancellations may not be refundable. Tentative performances are as follows:



## GRAND OLE OPRY

The Grand Ole Opry performs at The Ryman Auditorium: Jan., Feb., Nov., Dec. It performs at The Grand Ole Opry House (at the Opryland Hotel): Mar. 1 - Oct. 31. Immerse yourself in the past, present and future of America's Music...Country Music! The Grand Ole Opry is truly the show that made country music famous. Started over 80 years ago, this is the nation's longest-running radio show, and

has spread country music around the world. **Performances:** Fri. at 8:00pm year around • Sat. at 7:00pm year around and 9:30pm in Mar.-Apr., Jun.-Jul., Sep.-Dec.; Tues. at 7:00pm (Mar. 3 to Dec. 14). Included on all our Nashville packages, except Plan 2A. **Gold Circle Seating:** Upgrade to the best seats in the house, near the stage - add \$20 per person. **Show cancellations may not be refundable.**



## OPRY COUNTRY CLASSICS

This is an all-new addition to the Opry's schedule of weekly shows, shining a spotlight on classic songs that have defined Country Music for generations of fans. This performance celebrates Country Music's colorful story through a live performance featuring country favorites by legends and talented new artists, a rousing live band, square dancing and more.

Performs on select dates at the Grand Ole Opry House (at the Opryland Hotel): March to April, June to July and September to October; exact dates available at time of booking. **Performances:** Thursdays at 7:00pm **Optional Add-on:** \$32 per person **Gold Circle Seating:** Upgrade to the best seats in the house, near the stage - add \$20 per person.



## ALWAYS PATSY CLINE! - AT THE RYMAN

One of Nashville's most popular musical stage productions, "Always...Patsy Cline" is more than a tribute to the legendary country singer who died tragically at age 30 in a plane crash in 1963. The show is based on a true story about Cline's friendship with a fan from Houston named Louise Seger, who befriended the star in a Texas honky-

tonk in 1961, and continued a correspondence with Cline until her death. Performed at the famous Ryman Auditorium in downtown Nashville. **Performances:** Every Wednesday and Friday at 7:30pm and Saturdays at 2:00pm and 7:30pm from April 15-29 and May 6-23 only. **Optional Add-on:** \$35 per person **Transfers:** For guests staying at the Opryland Hotel and Radisson, a shuttle to Ryman Auditorium is available at a nominal charge.



## GENERAL JACKSON SHOWBOAT DINNER CRUISE

On the General Jackson Dinner Cruise and Show, you'll have an unforgettable time aboard this historic 300-foot-long paddlewheel boat. You'll cruise the Cumberland River and enjoy a seated dinner and stage show aboard the

largest showboat in the world. The General Jackson Dinner Cruise is one of the most popular activities in Nashville. **Sailings:** Wednesday, Thursday, Friday & Saturday from March 17-October 30. This feature is available to all customers who purchase one of our packages that includes a Group II selection. **Optional Dinner Cruise:** \$95 per person



## WILDHORSE SALOON

Entertainment destination and a mecca of entertainment in America. To capture the attention of Nashvillians and country music visitors, on June 1, 1994, the history of the World Famous Wildhorse Saloon began with country superstar Reba McEntire herding a stampede of live cattle through the streets of Music City. The cattle were herded down Second Avenue and past

the front doors of the newly opened club. Since then, the Wildhorse has continued to capture the interest of visitors with its award-winning menu, unique attractions and one-of-a-kind capabilities. You will find three floors of action-packed fun, including live music nightly and complimentary dance lessons on the largest dance floor in town. Enjoy a Southern barbecue buffet smokehouse spread. **Lunch Optional Add-on:** \$40 per person. Transportation not included.



## COUNTRY MUSIC FESTIVAL

The CMA Music Festival takes place around three venues in the downtown area of Nashville. The first is the Nashville Convention Center where all of the booths are contained in air conditioned comfort. The Riverfront Park stage features shows from some of the best, and some of the up and coming stars in country music all day long. At night The LP Field lights

up the town with the best labels in town showing off the best selling artists all together in one place. **See page 23 for details.** **Arrive:** June 9, 2010, for four days and nights of music and fun. **Includes:** Ticket to the Grand Ole Opry, Admission to the Country Music Hall of Fame, Self-guided tour of the Ryman Auditorium, Admission to Wildhorse Saloon, Delta Flatboat ride at Delta Atrium at the hotel.

# NEW ORLEANS

Your Tour Package Includes the Following Number of Selections from Each Activity Group

PLAN	HOTEL NIGHTS	# OF SELECTIONS FROM ACTIVITY GROUPS					EFFECTIVE DATES
		I	II	III	IV	V	
2A	2 nights hotel & tax	1	0	0	0	0	1/1-12/31
2B	2 nights hotel & tax	0	0	0	0	1	1/1-12/31
3A	3 nights hotel & tax	1	0	0	0	3	1/1-12/31
3B	3 nights hotel & tax	0	1	1	0	1	1/1-12/31
3C	3 nights hotel & tax	1	1	1	0	0	1/1-12/31
3D	3 nights hotel & tax	0	0	1	1	1	1/1-12/31
4A	4 nights hotel & tax	1	1	2	0	1	1/1-12/31
4B	4 nights hotel & tax	1	1	1	1	1	1/1-12/31
4C	4 nights hotel & tax	2	2	1	0	1	1/1-12/31
4D	4 nights hotel & tax	0	0	2	1	2	1/1-12/31



ASTOR CROWNE PLAZA



BIENVILLE HOUSE



INN ON BOURBON



MONTELEONE



OMNI ROYAL ORLEANS



SHERATON NEW ORLEANS

Visit [www.cityescapes.com](http://www.cityescapes.com) for hotel descriptions

## FEATURES ACTIVITY GROUPS

### GROUP I - SIGHTS

- Gray Line City Tour
- Ghosts and Spirits Tour
- French Quarter Walking Tour
- Cemetery Tour
- Garden District Walking Tour
- Hurricane Katrina Tour
- Natchez Harbor Cruise

### GROUP II - SIGHTS

- Laura Plantation Tour
- Oak Alley Plantation Tour
- Paddle and Wheel Tour
- Swamp and Bayou Tour
- River Cruise w/Aquarium, Zoo and IMAX Theater

### GROUP III - DINNERS

- Arnaud's
- Brennan's
- Mr. B's
- Bacco
- Commander's Palace
- Court of Two Sisters

### GROUP IV - JAZZ CRUISES

- Natchez Dinner Jazz Cruise - 7pm
- Creole Queen Dinner Jazz Cruise - 8pm

### GROUP V - SPECIALITY DINING

- Breakfast at Brennan's
- Court of Two Sisters Jazz Brunch
- Tujague's Lunch or Early Bird Dinner

Optional Roundtrip Airport Transfers:  
\$30.00 per person

See Page 21 for Packages for Mardi Gras, Jazz Fest and Essence Music Festival



Natchez Riverboat



HOTEL	DATES and SEASON	CODE	2 NTS			3 NTS			4 NTS			EXT. NTS		
			SGL	DBL	TPL	SGL	DBL	TPL	SGL	DBL	TPL	SGL	DBL	TPL
ASTOR CROWNE PLAZA	6/11-9/19	L	\$425	269	239	735	499	455	1015	709	659	158	79	65
	1/3-6/10, 9/20-12/28	H	565	339	285	945	609	529	1295	855	755	228	114	89
BIENVILLE HOUSE	6/11-9/19	L	395	255	235	685	485	445	949	679	625	146	73	60
	1/3-6/10, 9/20-12/28	H	509	319	265	859	575	505	1179	799	715	198	99	78
INN ON BOURBON	6/11-9/19	L	425	269	225	735	499	425	1015	709	615	158	79	55
	1/3-6/10, 9/20-12/28	H	469	289	239	809	545	455	1125	769	659	188	94	65
MONTELEONE	6/11-9/19	L	395	259	239	695	489	459	965	689	649	146	73	63
	1/3-6/10, 9/20-12/28	H	585	355	299	975	635	555	1345	889	785	238	119	94
OMNI ROYAL ORLEANS	6/11-9/19	L	425	269	NA	735	499	NA	1015	709	NA	158	79	NA
	1/3-6/10, 9/20-12/28	H	565	339	NA	945	609	NA	1295	855	NA	228	114	NA
SHERATON NEW ORLEANS	6/11-9/19	L	375	235	219	659	459	439	909	655	625	136	68	60
	1/3-6/10, 9/20-12/28	H	545	325	279	899	589	525	1235	829	745	212	106	86

Season Codes: H=High, L=Low. Rates shown do not apply to Special Event Periods: Mardi Gras (Feb. 13-17), Jazz Fest (Late Apr.-Early May), Essence Music Festival (July 1-4), and Sugar Bowl (Dec. 31-Jan. 1). See Special Event Packages section of this brochure for details and rates. Children are free in same room with parents under these ages: Bienville House, Crowne Plaza, Monteleone, Sheraton and Omni Royal Orleans 18; Inn on Bourbon 16. Features rates for children are available on request.

# SAN FRANCISCO

Your Tour Package Includes the Following Activities:

PLAN	HOTEL NIGHTS	Trolley	Muir	Napa	EFFECTIVE DATES
2A	2 nights hotel & tax	Yes	0	0	1/1-12/31
3A	3 nights hotel & tax	Yes	Yes	0	1/1-12/31
4A	4 nights hotel & tax	Yes	Yes	Yes	1/1-12/31

**Trolley Hop:** Hop-on/Hop-off at four top tourist spots in the city, tour duration is up to you. Daily  
**Muir Woods/Sausalito Tour:** Narrated, 3 hours, Daily  
**Napa Wine Country Tour:** Visit 2 wineries. Narrated, 9 hours, Daily

There is so much to see and do in San Francisco. That is why it is a perfect city to "Build Your Own" tour package. We have pre-packaged a simple 2 night, 3 night and 4 night program, including the features shown in the chart above; these are popular tours that our guests most frequently ask for. Now you can add Extra Nights and Add-on Activities as you wish, to custom-design your own program. City Tours, Bay Cruises, Day Trips and Great Dining will round-out your trip.

## ADD-ON ACTIVITIES

	Adult	Child (2-11 Yrs)
#1 Cruise to Alcatraz 1.5 hours, Daily	\$27	26
#2 Deluxe City Tour 3.5 hours, Daily	46	23
#3 Deluxe City Tour and Bay Cruise 4.5 hours, Daily	68	37
#4 Muir Woods/Sausalito Tour 3.5 hours, Daily	52	23
#5 Golden Gate Bay Cruise 1 hour, Daily	23	17
#6 Explorer Cruise 1.5 hours, Daily	35	23
#7 Sunset Cruise 2 hours, Daily	49	35
#8 Muir Woods/Sausalito Bay Cruise 4.5 hours, Daily	72	38
#9 Monterey/Carmel Tour 11 hours, Daily	73	45
#10 Napa Wine Country Tour 9.5 hours, Daily	72	44
#11 Yosemite by Motorcoach 14 hours, Daily	145	85
#12 Chinatown Walking Tour and Dinner 3.5 hours, Thu-Sat	69	55
#13 Lunch at Pier 39, Daily	30	30
#14 Dinner at Pier 39, Nightly	42	42
#15 Hornblower Brunch Cruise, Sat & Sun only	76	76



ARGONAUT HOTEL



HOLIDAY INN EXPRESS WHARF



HOLIDAY INN FISHERMAN'S WHARF



INTERCONTINENTAL MARK HOPKINS



SIR FRANCIS DRAKE



TUSCAN INN FISHERMAN'S WHARF



Photo by Jerry Lee Hayes



### Optional Airport Transfers:

\$26 Per Person, Roundtrip - Available from SFO only

Visit [www.cityescapes.com](http://www.cityescapes.com) for hotel descriptions

HOTEL	RATES PER PERSON	DATES and SEASON	CODE	2 NTS			3 NTS			4 NTS			EXT. NTS		
				SGL	DBL	TPL	SGL	DBL	TPL	SGL	DBL	TPL	SGL	DBL	TPL
ARGONAUT HOTEL		1/1-3/31,11/1-12/31	L	\$565	335	285	849	505	425	1155	695	589	234	117	91
		4/1-10/31	H	689	395	325	1029	589	485	1389	805	669	290	145	110
HOLIDAY INN EXPRESS WHARF		1/1-3/31,11/1-12/31	L	465	275	235	705	419	325	965	585	525	190	95	75
		4/1-10/31	H	605	355	295	909	535	439	1235	735	605	256	128	95
HOLIDAY INN FISHERMAN'S WHARF		1/1-3/31, 11/1-12/31	L	465	275	235	705	419	325	965	585	525	190	95	75
		4/1-10/31	H	605	355	295	909	535	439	1235	735	605	256	128	95
INTERCONTINENTAL MARK HOPKINS		1/1-3/31, 11/1-12/31	L	705	399	335	1059	599	505	1435	825	695	304	152	118
		4/1-10/31	H	865	495	405	1295	735	599	1745	995	815	380	190	144
SIR FRANCIS DRAKE HOTEL		1/1-3/31,11/1-12/31	L	445	265	235	679	409	359	935	569	505	182	91	73
		4/1-10/31	H	545	325	275	809	485	409	1095	665	569	230	115	89
TUSCAN INN FISHERMAN'S WHARF		1/1-3/31,11/1-12/31	L	445	265	235	679	409	359	935	569	505	182	91	73
		4/1-10/31	H	569	339	285	859	509	425	1169	699	589	240	120	91

Season Codes: H=High, L=Low. Children's Rates: Children under 18 are free in same room with parents at all hotels. Children's features rates available on request.

# MORE GREAT CITIES

## MEMPHIS



### Your Tour Package Includes:

**Plan 2A** Platinum Admission Ticket to Graceland Mansion

**Plan 3A** Platinum Admission Ticket to Graceland Mansion and City Tour - 3 hours

RATES PER PERSON	2 NIGHTS - 2A			3 NIGHTS - 3A			EXTRA NIGHTS		
	HOTEL	SGL	DBL	TPL	SGL	DBL	TPL	SGL	DBL
CROWNE PLAZA	\$415	269	235	595	369	315	154	77	57
HOLIDAY INN SELECT	445	285	249	629	395	335	160	80	59
HEARTBREAK HOTEL	409	259	225	589	365	309	152	76	56

Effective Dates: 1/1-12/31. Children under 18 are free in same room with parents at all hotels. Upgrade Graceland Platinum Ticket to the Entourage VIP Ticket for \$39. Graceland is closed Tuesdays Nov-Feb.

## LOS ANGELES



### Your Tour Package Includes:

**Plan 2A** Movie Stars Homes Tour #5

**Plan 3A** Movie Stars Homes Tour #5, plus Admission to Universal Studios

RATES PER PERSON	2 NIGHTS - 2A			3 NIGHTS - 3A			EXTRA NIGHTS		
	HOTEL	SGL	DBL	TPL	SGL	DBL	TPL	SGL	DBL
HILTON AT LAX	\$379	245	215	619	399	369	138	69	55
SHERATON UNIVERSAL	585	345	295	915	569	495	240	120	93
WESTIN AT LAX	395	255	225	629	415	379	148	74	58

Effective Dates: 1/1-12/31. Children under 18 are free in same room with parents at all hotels. Optional Add-on Attractions: Knotts Berry Farm: \$96 Ad/\$86 Ch; Disneyland: \$116 Ad/\$96 Ch; Six Flags Magic Mtn: \$105 Ad/\$75 Ch; SeaWorld San Diego: \$105 Ad/\$85 Ch; San Diego Zoo: \$95 Ad/\$75 Ch; Getty Museum: \$47 Ad/\$37 Ch

## SEATTLE



### Your Tour Package Includes:

**Plan 2A** Double Decker Hop-on/Hop-off City Tour

**Plan 3A** Double Decker Hop-on/Hop-off City Tour & All Tour to Mt. Ranier - 10 hours

RATES PER PERSON	DATES	2 NTS - 1/1-12/31			3 NTS - 5/1-9/30			EXTRA NIGHTS		
		HOTEL	SGL	DBL	TPL	SGL	DBL	TPL	SGL	DBL
CROWNE PLAZA SEATTLE	1/1-3/31, 10/25-12/31 L	\$449	275	239	699	435	355	182	91	72
	4/1-10/24 H	525	315	275	825	489	395	216	108	83

Plan 2A: 1/1-12/31; Plan 3A: 5/1-9/30 only. Season codes: L= Low, H= High. Children under 18 are free in same room with parents. Option: Day trip to Victoria: \$136 Adult/ \$69 Child

## SAN ANTONIO



### Your Tour Package Includes:

**Plan 2A** River Cruise on a famous San Antonio riverboat through the heart of the city

**Plan 3A** River Cruise, plus San Antonio Sights Hop-On/Hop-Off Tour, including the Alamo

RATES PER PERSON	DATES	2 NIGHTS - 2A			3 NIGHTS - 3A			EXTRA NIGHTS		
		HOTEL	SGL	DBL	TPL	SGL	DBL	TPL	SGL	DBL
HOLIDAY INN RIVERWALK	1/1-3/31, 11/1-12/31 L	\$499	275	215	765	425	329	220	110	78
	4/1-10/31 H	519	295	225	785	445	339	230	115	80

Effective Dates: 1/1-12/31. Season codes: L= Low, H= High. Children under 18 are free in same room with parents.

## SAN DIEGO



### Your Tour Package Includes:

**Plan 2A** Admission and transportation to San Diego Zoo

**Plan 3A** Admission and transportation to San Diego Zoo and SeaWorld on separate days

RATES PER PERSON		2 NIGHTS - 2A			3 NIGHTS - 3A			EXTRA NIGHTS		
		HOTEL	SGL	DBL	TPL	SGL	DBL	TPL	SGL	DBL
COMFORT INN	L	\$385	255	225	629	425	375	140	70	53
ZOO/SEAWORLD	H	455	285	239	719	475	405	166	83	62
MARR. COURTYARD	L	385	255	225	629	425	375	140	70	53
MISSION VALLEY	H	509	319	269	799	519	439	198	99	73
HOLIDAY INN	L	489	299	245	765	495	415	188	94	70
DOWNTOWN	H	555	339	279	865	549	459	220	110	80

Season codes: L=Low: 1/1-5/19, 9/7-12/31; H=High: 5/20-9/6. Children under 18 are free in same room with parents. Rates for features part of package available on request. Optional Add-ons: Wild Animal Park \$69 Adult/ \$59 Child; City Tour \$37 Adult/\$20 Child; Legoland \$94 Adult/\$83 Child

## PHILADELPHIA



### Your Tour Package Includes:

**Plan 2A** Hop On/Hop-off Double Decker. All day, 21 stops

**Plan 3A** Hop On/Hop-off Double Decker plus All day trip to Amish Country

RATES PER PERSON		2 NTS - 1/1-12/31			3 NTS - 4/1-12/31			EXTRA NIGHTS		
		HOTEL	SGL	DBL	TPL	SGL	DBL	TPL	SGL	DBL
CROWNE PLAZA DWTN		\$419	259	215	749	499	445	162	81	60
SHERATON SOCIETY HILL		439	275	235	779	525	469	174	87	68

Plan 2A: 1/1-12/31; Plan 3A: 4/1-12/31 only. Children under 18 are free in same room with parents.

# CANADA

## MONTREAL



**Your Tour Package Includes:**

Plan 2A Guided Greater Montreal Tram, covering 200 points of interest - 3 hours

RATES PER PERSON	DATES	2 NIGHTS - 2A			EXTRA NIGHTS		
		HOTEL	SGL	DBL	TPL	SGL	DBL
HOLIDAY INN MIDTOWN	1/1-12/30 Y	\$375	199	169	150	75	55

Season codes: Y= Year. Children under 18 are free in same room with parents; tour rate available on request. Sightseeing tour is limited during the early and late part of the year.

## QUEBEC CITY



**Your Tour Package Includes:**

Plan 2A City Tour covering the old and new parts of the city - 3 hours

RATES PER PERSON	DATES	2 NIGHTS - 2A			EXTRA NIGHTS		
		HOTEL	SGL	DBL	TPL	SGL	DBL
CHATEAU FRONTENAC	5/1-6/19 L	\$655	375	299	296	148	113
	6/20-10/20 H	999	575	429	480	240	176

Effective dates: 5/1-10/20. Season codes: L= Low, H= High. Children under 18 are free in same room with parents; tour rate available on request. Sightseeing tour is limited during the early and late part of the year.

## TORONTO



**Your Tour Package Includes:**

Plan 2A Double Decker Hop-on/Hop-off City Tour

RATES PER PERSON	DATES	2 NIGHTS - 2A			EXTRA NIGHTS		
		HOTEL	SGL	DBL	TPL	SGL	DBL
INTERCONTINENTAL TORONTO	1/1-4/30, L	\$565	299	265	240	120	88
	11/1-12/31 H						
	5/1-10/31 H	694	379	315	298	149	110

Season codes: L= Low, H= High. Children under 18 are free in same room with parents; tour rate available on request. Optional Add-On: Tour to Niagara Falls - \$140 per person (plus extra night at hotel.)

## NIAGARA FALLS



**Your Tour Package Includes:**

Plan 2A Gray Line Canadian Rainbow Tour, including all the top sights - 5 hours

RATES PER PERSON	DATES	2 NIGHTS - 2A			EXTRA NIGHTS		
		HOTEL	SGL	DBL	TPL	SGL	DBL
CROWNE PLAZA FALLSVIEW - City View	5/15-6/18, 10/11-10/24 L	\$449	299	279	150	75	61
	9/6-10/10 M						
	6/19-9/5 H	705	439	375	280	140	99
SHERATON ON THE FALLS - City View	5/15-6/18, 10/11-10/24 L	\$475	315	289	164	82	64
	9/6-10/10 M						
	6/19-9/5 H	659	399	345	250	125	93

Hotels are on Canadian side. Season codes: L= Low, M= Mid, H= High. Off-season rates: 1/1-5/14, 10/25-12/31, available on request. Children under 18 are free in same room with parents at both hotels; tour rate available on request. Ask about our rates for the Hampton Inn. Upgrade to a Fallsview Room, add \$30 per person, per night.

## VANCOUVER



**Your Tour Package Includes:**

Plan 2A Grand City Highlights Tour covering all major areas - 3 hours

RATES PER PERSON	DATES	2 NIGHTS - 2A			EXTRA NIGHTS		
		HOTEL	SGL	DBL	TPL	SGL	DBL
SHERATON WALL CENTRE	10/1-10/31 M	\$689	399	349	272	136	110
	5/1-9/30 H	755	435	375	298	149	115

Low Season: Rates on request, M= Mid, H= High. Children under 18 are free in same room with parents; tour rate available on request.

## VICTORIA



**Your Tour Package Includes:**

Plan 2A Gray Line Butchart Gardens Tour

RATES PER PERSON	DATES	2 NIGHTS - 2A			EXTRA NIGHTS		
		HOTEL	SGL	DBL	TPL	SGL	DBL
EXECUTIVE HOUSE HOTEL	5/1-6/14, M	\$485	295	245	194	97	73
	10/1-10/14 M						
	6/15-9/30, H	\$585	345	285	244	122	90

Low Season: Rates on request (4/1-4/30 & 10/15-10/31), M= Mid, H= High. Children under 18 are free in same room with parents; tour rate available on request.

# ROSE PARADE

## PLAN B - PARADE BASIC

Arrive: December 30, 2010 Depart: January 2, 2011

**INCLUDES:** • 3 nights accommodation and tax • Choice grandstand seats near the start of the Rose Parade. Our seats are located on Colorado Blvd., just after the turn from Orange Grove where the Parade begins. This is an excellent vantage point for viewing and picture taking of the many beautiful floats. • Comfortable deluxe motorcoaches to the Parade on January 1 • Full American Breakfast January 1 • Box lunch and refreshments January 1 • Souvenir pin • Hospitality desk service at hotel December 30 • Host assistance on January 1 • All taxes and gratuities (except airport and hotel portage)



HILTON LAX AIRPORT



SHERATON UNIVERSAL



WESTIN LAX AIRPORT



BANDS GALORE!



FLOAT CONSTRUCTION



FANTASY FLOATS

## PLAN A - PARADE DELUXE

Arrive: December 30, 2010 Depart: January 2, 2011

**INCLUDES:** • All features shown for Plan B above PLUS: • Buffet Dinner, Reception and Orientation December 30 • Visit to float construction pavilions December 31 • Visit to Universal Studios OR J. Paul Getty Museum December 31 • Full American Breakfast Buffet December 31 • Commemorative personalized Rose Parade Plaque • Comfortable deluxe motorcoaches on December 31 and January 1 • Host assistance December 31 • All taxes and gratuities (except airport and hotel portage)

PARADE ONLY	PLAN A				PLAN B			
RATES PER PERSON	SGL	DBL	TPL	QD	SGL	DBL	TPL	QD
<b>Westin LAX Airport</b>	\$1159	895	875	865	845	585	565	555
Extra Nights	150	75	60	55	150	75	60	55
<b>Hilton LAX Airport</b>	1159	895	875	865	845	585	565	555
Extra Nights	150	75	60	55	150	75	60	55
<b>Sheraton Universal</b>	1509	1115	1039	1029	1189	799	715	705
Extra Nights	252	126	98	93	252	126	98	93

**Note:** Guests on Plans A or B who have their own Rose Bowl game tickets may purchase our game transfers for \$50.00 per person. We need to be advised at time of booking.  
**Children's Rates:** Plan A - \$635; Plan B - \$359

**OPTIONAL AIRPORT TRANSFERS:** \$32 per person roundtrip, but free to airport hotels.

## THE 122nd ROSE PARADE in PASADENA, CA

On January 1, the eyes of the world turn to the Rose Parade in Pasadena, CA, for a spectacular display of magnificent floral floats, talented marching bands and high-stepping equestrian units. The Tournament of Roses celebration dates back to 1890, when the Pasadena Valley Hunt Club readied their horse-drawn coaches with fresh-cut flowers from their gardens in celebration of the mild winter weather of the West. Today, the Rose Parade is an event with breathtaking, floats that tout the world's rare and exotic flowers and showcase animated technology at its finest.

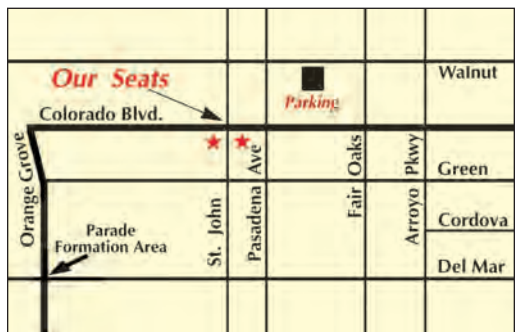
Visit [www.cityescapes.com](http://www.cityescapes.com) for hotel descriptions

## AFTER-PARADE FLOAT VIEWING

A Showcase of Floats is a unique opportunity for the public to step up close and see for themselves the majestic beauty and splendor of the floral floats. Viewing will be from about 1pm to 4pm and don't forget your camera!

After every Rose Parade, the floral masterpieces are parked along Sierra Madre and Washington Boulevards in Pasadena and exhibited for visitors to walk by and see in close detail the design and workmanship that goes into these floats. Visitors are able to walk almost within an arm's reach of the floats and appreciate for themselves the creativity and the imagination of the floral displays. This has been a Pasadena tradition for over 100 years. As an added enjoyment, there are demonstrations of the animated floats. These hydraulic floats will entertain you with their funny and clever movements. Of course, parade personnel will be on hand to answer your many questions. Please come and enjoy the beauty and imagination of these floral creations. Park closes at 5:00pm. **\$40 - Adult or Child.**

## OUR SEATS



Our seats are located four blocks after the turn onto Colorado Blvd., a perfect location for picture taking. Seats are on the south side of Colorado, facing away from the sun. Our motorcoach parking lot is two blocks away. For bookings made after November 15, seating may be in other close-by areas.

# ROSE PARADE/ROSE BOWL COMBO



TOP FOOTBALL ACTION

## PLAN D - PARADE DELUXE & ROSE BOWL GAME

Arrive: December 30, 2010 Depart: January 2, 2011

This plan combines the **Deluxe** Parade package with the Rose Bowl Game. Features include everything listed for **Plan A** on page 18 PLUS: Endzone Rose Bowl Game ticket (upgraded game tickets available at a surcharge) • Deluxe motorcoach transportation to the Rose Bowl on January 1, with refreshments on-board • Souvenir Game Program • Host assistance

## PLAN E - PARADE BASIC & ROSE BOWL GAME

Arrive: December 30, 2010 Depart: January 2, 2011

This Plan combines the **Basic** Parade package with the Rose Bowl Game. Features include everything listed for **Plan B** on page 18 PLUS: Endzone Rose Bowl Game ticket (upgraded game tickets available at a surcharge) • Deluxe motorcoach transportation to the Rose Bowl on January 1, with refreshments on-board • Souvenir Game Program • Host assistance



MORE THAN 20 BANDS



IMAGINATIVE FLOATS

PARADE/GAME	PLAN D				PLAN E			
	SGL	DBL	TPL	QD	SGL	DBL	TPL	QD
Westin LAX Airport	\$1759	1495	1475	1465	1445	1185	1165	1155
Hilton LAX Airport	1759	1495	1475	1465	1445	1185	1165	1155
Sheraton Universal	2109	1715	1639	1629	1789	1399	1319	1309

Extra Nights: See Plan A/Plan B Rate Chart on page 18

Children's Rates: Plan D - \$1199; Plan E - \$925

## THE 97th ROSE BOWL GAME

For football enthusiasts of all ages, the Rose Bowl on New Year's day represents the tradition of college football at its finest. Players, coaches, students, parents and alumni journey from near and far to pack the historic Rose Bowl stadium and cheer for their team in "The Granddaddy of Them All." You will truly enjoy this spectacular venue.

## COLLEGE NATIONAL CHAMPIONSHIP GAME

Ask about our packages for the BCS College National Championship Game at the Rose Bowl 1/7/10.



EXCELLENT PARADE SEATS

## ONE DAY PLANS

### PLAN F - ONE DAY PARADE & GAME

**INCLUDES:** • January 1, 2011 • Roundtrip transportation from pick-up point (to be advised) to Pasadena via comfortable, deluxe motorcoach. Guests must be there at 5:15am! Return to starting point after the game (about 7:00pm). Box lunch and refreshments on board. • Choice reserved seating to Rose Parade. Seats are located on famous Colorado Blvd., just after the turn from Orange Grove where the Parade begins. See page 18 for details • Endzone ticket to the Rose Bowl Game (Upgraded game tickets are available at a surcharge) • Souvenir Game Program • Host assistance **\$799 - Adult or Child.**

### PLAN G - ONE DAY PARADE

**INCLUDES:** • January 1, 2011 • Roundtrip transportation from pick-up point (to be advised) to Pasadena via comfortable, deluxe motorcoach. Guests must be there at 5:15am! Return to starting point about 12 noon. • Choice reserved seating to Tournament of Roses Parade. Seats are located on Colorado Blvd., just after the turn from Orange Grove, where the Parade begins. See page 18 for details • Box lunch and refreshments • Host assistance **\$259 - Adult or Child.**  
Make it an all day excursion by continuing to the after-parade float viewing area. Add \$40 per person. See page 18 for details.

# SPECIAL EVENT PACKAGES



## ROSE PARADE

Plan 3B - Arrive December 30, 2010

- **STAY:** 3 Nights
- **HOTEL:** Westin/Hilton at LAX, Sheraton Universal
- **FEATURES:** Grandstand seats near start of parade, Hotel hospitality service, Host assistance, Motorcoach to Parade, Breakfast and box lunch, Souvenir pin, taxes and gratuities (except airport and hotel portorage)

	RATES PP:	SGL	DBL	TPL	QD
Hilton/Westin	\$845	585	565	555	
Sheraton	1189	799	715	705	

See pages 18-19 for more packages

## ROSE PARADE/GAME

Plan 3E - Arrive December 30, 2010

- **STAY:** 3 Nights
- **HOTEL:** Westin/Hilton at LAX, Sheraton Universal
- **FEATURES:** Includes Plan 3B Features PLUS: Rose Bowl Game ticket (Reserved endzone seat for game, Upgraded seats available), Souvenir game program

	RATES PP:	SGL	DBL	TPL	QD
Hilton/Westin	\$1445	1185	1165	1155	
Sheraton	1789	1399	1319	1309	



## BCS COLLEGE CHAMPIONSHIP GAME

Plan 2A - Arrive January 6, 2010  
At the Rose Bowl in Pasadena, CA

- **STAY:** 2 Nights
- **HOTEL:** Hilton Hotel at LAX Airport
- **FEATURES:** Endzone game ticket, upper area, Roundtrip game transfers

	RATES PP:	SGL	DBL	TPL	QD
Hilton LAX	\$1525	1325	1265	1245	

### ABOUT THE BCS CHAMPIONSHIP BOWL GAME:

In early January the Rose Bowl Stadium will host the final college bowl game of the season. At stake is the national college football championship. Teams are selected in early December. Tickets to the game can be upgraded to the lower area of the endzone or sidelines at a surcharge.

**Note:** This game will be played in the Rose Bowl Stadium, but does not replace the traditional Rose Bowl Game, to be held January 1. Refer to Rose Bowl section for details.



## PRO FOOTBALL CHAMPIONSHIP GAME

The most Super of all bowl games  
NFC vs. AFC - South Florida

Plan 3A - Arrive February 5, 2010

- **STAY:** 3 Nights
- **HOTEL:** Holiday Inn - Ft. Lauderdale Sunrise
- **FEATURES:** Endzone game ticket, upper level, Roundtrip game transfers via deluxe motorcoach, Admission to NFL Experience, Souvenir plaque, program, pin and cap

	RATES PP:	SGL	DBL	TPL	QD
Holiday Inn	\$5695	4695	4595	4495	

**SEATING AT THE GAME:** Seats are in the upper level of the endzone at Landshark Stadium. We can provide upgraded tickets, at the following add-on rates: Upper Level Corner - add \$500; Upper Level Endline to 20-yard line - add \$650; Upper Level 20-40-yard line - add \$975; Lower Level Endzone - add \$800; Lower Level Corner - add \$1100; Lower Level Endline to 20-yard line - add \$3300; Lower Level 20-40-line - add \$3950



## KENTUCKY DERBY

Plan 3A, B or C - Arrive April 29, 2010

- **STAY:** 3 Nights
- **HOTEL:** Hampton Inn Louisville Downtown
- **FEATURES:** Reserved seats for The Oaks and Derby Races in your choice of seating section (see right column), Complimentary breakfast each morning, Souvenir plaque, pin and Official Derby magazine

**SEATING AT THE TRACK:** Last Turn and Stretch Run tickets are based on First Floor Grandstand seating; Finish Line tickets are in the First Floor Clubhouse.

	RATES PP:	SGL	DBL	TPL	QD
3A Last Turn	\$3325	2195	1795	1595	
Sec. 126-128					
3B Stretch Run*	3475	2345	1945	1745	
Sec. 122-125					
3C Finish Line	4825	3695	3295	3095	
Sec. 116-117					

\*Upgrade Stretch Run seats to Sections 119-121 for \$150

1 & 2 bedroom suites available at a surcharge, rates and availability quoted at booking.



## DAYTONA 500 52nd Running

Plan 2A - Arrive February 13, 2010

- **STAY:** 2 Nights
- **HOTEL:** Embassy Suites, Lake Buena Vista (Orlando)
- **FEATURES:** Reserved ticket to the Daytona 500 in the Front Stretch or Back Stretch area Feb. 14, (Upgraded seats available), Roundtrip transportation to Daytona International Speedway, Breakfast each morning, Manager's reception, Souvenir plaque

	RATES PP:	SGL	DBL	TPL	QD
Embassy Suites	\$1325	895	825	775	

**SEATING AT THE TRACK:** Rates are based on reserved seating in the high rows of Oldfield Tower, featuring great views of the track. These seats are right at the exciting Turn 4, where all the action is, and not far from the entrance to Pit Road.

**ABOUT THE EVENT:** NASCAR at its best! Watch your favorite drivers compete, including Mark Martin, Jeff Gordon, Jimmy Johnson, Kyle Busch, Tony Stewart and more! Come early and take in the Camping World Truck Series and the 300 NASCAR Nationwide Series races.



## INDY 500

Plan 3A - Arrive May 28, 2010

- **STAY:** 3 Nights
- **HOTEL:** Courtyard by Marriott Capitol
- **FEATURES:** May 30: Ticket to the Indy 500 race in the Tower Terrace, Admission to after-race press interviews in garage area, Limo transfers, Admission to Indy 500 Hall of Fame Museum. May 29: Indy 500 Festival Parade, (VIP Seats); Souvenir plaque

	RATES PP:	SGL	DBL	TPL	QD
Marriott Courtyard	\$1795	1095	995	895	

**SEATING AT THE TRACK:** The Tower Terrace seats are in the grandstand in high rows, providing excellent views of the straight-away and pit road. They are not far from the finish line.

**ABOUT THE EVENT:** The greatest of all Indy car races. See your favorite stars compete, including Tony Kanaan, Helio Castroneves, Marco Andretti, Danica Patrick and more! But the 500 Festival includes so much more, including nearly 50 events and programs that celebrate the success of this wonderful event. It has become one of the nation's largest festivals.

# SPECIAL EVENT PACKAGES



## BASEBALL ALL STAR GAME - ANAHEIM

Plan 2A - Arrive July 12, 2010

- STAY: 2 Nights
- HOTEL: Anaheim Hilton
- FEATURES: Reserved seating at the MLB All Star Game in the Outfield Terrace area, Souvenir plaque
- RATES PP: 

	SGL	DBL	TPL	QD
Anaheim Hilton	\$1875	1485	1395	1345

**GAME TICKET UPGRADES:** To Lower Deck and to First and Third Baselines are available on request.

**WORK-OUT DAY - Home Run Derby - July 12:**

Add \$500 pp, plus one Extra Night

**ABOUT THE MLB ALL STAR GAME:** Along with the World Series, this is Major League Baseball's premier event, with the top stars from the American and National League facing off. The game is more than just a showcase of baseball's best players; recently it has taken on added significance, in that the winner of the game also wins home-field advantage for their league for the World Series.



## ESSENCE MUSIC FESTIVAL - NEW ORLEANS

Plan 3A - Arrive July 1, 2010

- STAY: 3 Nights
- HOTEL: Bienville House Hotel, Monteleone
- FEATURES: 2 nights admission to the Essence Music Festival at the Superdome
- RATES PP: 

	SGL	DBL	TPL	QD
Bienville House	\$1055	685	625	575
Monteleone	1175	755	675	595

**Note:** The two included performance days are Friday and Saturday; rates for a third day of performances and an additional night at the hotel are available on request.

**Plan 3B - Add 1 Dinner, 1 Breakfast at Brennan's and Dinner Jazz Cruise, to Plan 3A, for \$199 per person.**

**ABOUT ESSENCE MUSIC FESTIVAL:** Exciting performances at night allow festival goers to dance and sing along with the biggest names in rhythm and blues, classic soul, hip-hop, pop-funk, neo-soul and jazz. Over 50 acts a night play on five stages at the Superdome.



## MARDI GRAS

Plan 4A - Arrive February 13, 2010

- STAY: 4 Nights
- HOTEL: Bienville House Hotel or Monteleone
- FEATURES: Choice of one: City Tour or Natchez Riverboat Cruise
- RATES PP: 

	SGL	DBL	TPL	QD
Bienville House	\$1295	685	555	495
Monteleone	1625	835	695	585

**ABOUT THE MARDI GRAS PARADES:** The entire city is alive with high-spirited revelry demonstrated by the intense partying and traditional trinket tossing from floats and balconies. Although parade schedules may change, these four days have the best parades, locally known as Krewes, including Rex, Bacchus and Endymion. The origins of Mardi Gras can be traced to Medieval Europe though we have no written record of how that transformed into the Mardi Gras of today.

**Plan 4B - Add 1 Dinner, 1 Breakfast at Brennan's and Dinner Jazz Cruise, to Plan 4A, for \$199 per person.**



## JAZZ FEST NEW ORLEANS

Plan 3A - Arrive April 22, 2010 - 1st Wknd  
Arrive April 29, 2010 - 2nd Wknd

- STAY: 3 Nights
- HOTEL: Bienville House Hotel or Monteleone
- FEATURES: Transfers for two days to the Jazz Fest site, Two days admission to Jazz Fest
- RATES PP: 

	SGL	DBL	TPL	QD
Bienville House	\$1125	695	585	545
Monteleone	1395	825	675	595

**Note:** The two included performance days are Friday and Saturday; rates for a third day of performances and an additional night at the hotel are available on request. For the first weekend, the additional performance day is Sunday; for the second weekend the additional day(s) are Thursday and Sunday.

**ABOUT JAZZ FEST:** Performers and guests alike come from all over the world for this great event which is held at the New Orleans Fairgrounds - a short distance by shuttle from the French Quarter. Ten stages and show areas allow you to roam between each venue at your own pace.



## FRENCH QUARTER FESTIVAL - NEW ORLEANS

Plan 3A - Arrive April 8, 2010

- STAY: 3 Nights
- HOTEL: Bienville House Hotel or Monteleone
- FEATURES: Choice of one: City Tour or Natchez Riverboat Cruise
- RATES PP: 

	SGL	DBL	TPL	QD
Bienville House	\$945	495	395	345
Monteleone	1255	645	495	435

**Plan 3B - Add 1 Dinner, 1 Breakfast at Brennan's and Dinner Jazz Cruise, to Plan 3A, for \$199 per person.**

**ABOUT FRENCH QUARTER FESTIVAL:** A great festival highlighting food, music and art. There are 18 stages set up around the French Quarter, hosting 150 musical performances and 450 performers, with nearly 250 hours of free entertainment. In addition, New Orleans' great chefs put up 60 food and beverage stations where you can sample the very best of the city's cuisine at reasonable prices.



## SUGAR BOWL & NEW YEAR'S EVE IN NEW ORLEANS

Plan 3A - Arrive December 31, 2010

- STAY: 3 Nights
- HOTEL: Bienville House Hotel, Monteleone
- FEATURES: Endzone game ticket, upper level, City Tour or Natchez Riverboat Cruise
- RATES PP: 

	SGL	DBL	TPL	QD
Bienville House	\$1345	885	795	765
Monteleone	625	1075	925	855

**SUGAR BOWL GAME & SEATS INFO:** The Sugar Bowl Game, as part of the Bowl Championship Series, is one of four Bowl games that help determine the National Champion college football team. Sugar Bowl teams are selected in early December. Lower deck endzone ticket upgrades available at a surcharge; sideline upgrades also available.

**SUGAR BOWL:** This is one of those rare opportunities to combine one of college football's best games, with the sights, sounds, fun and ambience of one of America's greatest cities. This is truly one of the best places to "Ring in the New Year!"

# SPECIAL EVENT PACKAGES



## NEW YEAR'S EVE IN TIMES SQUARE

**Plan 3A - Arrive December 31, 2010**

- **STAY:** 3 Nights
- **HOTEL:** Crowne Plaza Times Square, Marriott Marquis or Sheraton New York
- **FEATURES:** One Broadway Show
- **RATES PP:**

	SGL	DBL	TPL	QD
Crowne Plaza	\$2449	1365	1095	975
Marriott Marquis	2435	1355	1055	NA
Sheraton NY	2155	1235	995	915

**EXTRA ACTIVITIES:** Add dinners, sightseeing tours, additional shows and museums; rates on request.

**ABOUT THE EVENT:** For those who have watched this event on TV for so many years, this is truly something you must see, up close and personal, a once in a lifetime experience! The Crowne Plaza and Marriott Marquis are located in the heart of Times Square in the "Greatest City in the World." The Sheraton is nearby. You can walk out into Times Square and find a great position from which to watch the famous New Year's Ball drop, in the seconds leading up to midnight and the ringing in of the New Year!



## NASHVILLE COUNTRY CHRISTMAS

**Plan 3D - Arrive Nov. 21-Dec. 25, 2010**

- **STAY:** 3 Nights
- **HOTEL:** Opryland Hotel or Radisson Opryland
- **FEATURES:** Tickets to the following: Radio City Christmas Spectacular starring the Rockettes; "Ice!" Show, at the hotel; The Louise Mandrell Christmas Dinner Show; The Grand Ole Opry (Tue, Fri or Sat only); General Jackson Breakfast or Lunch Cruise and Show; "Treasures for the Holidays" (art, antique and craft fair); Hall of Trees; applicable taxes and gratuities

- **RATES PP:**

	SGL	DBL	TPL	QD
Opryland Hotel-TR	\$995	659	525	475
Opryland Hotel-GR	1295	799	635	549
Radisson Opryland	845	599	529	519
- (TR=Traditional Room, GR= Garden View Room)

**ABOUT THE COUNTRY CHRISTMAS PROGRAM.** We have selected the Opryland Hotel because all the activities are right at the hotel, except the Grand Ole Opry performance, which is at the Ryman Auditorium (transfers are not included but are available from the hotel by shuttle at a nominal cost). The Radisson is right across the street from the Opryland Hotel.



## BRANSON CHRISTMAS

**Plan 4B - Arrive Nov. 1-Dec. 10, 2010**

- **STAY:** 4 Nights
- **HOTEL:** Branson Towers, Grand Oaks, Hampton Inn, Hilton Branson Landing, Radisson Branson
- **FEATURES:** 4 Top Shows (nominal surcharge may apply for some shows), 2 Dinners, Admission to Ripley's Believe-it-or-not Museum

- **RATES PP:**

	SGL	DBL	TPL	QD
Branson Towers	\$785	599	555	545
Grand Oaks	909	665	589	579
Hampton Inn	1055	745	645	635
Hilton Branson Landing	1229	825	729	719
Radisson Branson	999	699	609	599

**ABOUT BRANSON CHRISTMAS SHOWS:** There are too many excellent shows to list here, but we can provide tickets to any of over 20 top Christmas shows. Some require nominal surcharges.



## SHOPPERS WEEKENDS IN NYC

**Plan 3R - Arrive Dec. 2, 2010 Weekend #1 or Dec. 9, 2010 - Weekend #2**

- **STAY:** 3 Nights
- **HOTEL:** Crowne Plaza Times Square, Marriott Marquis, or Sheraton New York
- **FEATURES:** The Rockettes Christmas Show at Radio City Music Hall

- **RATES PP:**

	SGL	DBL	TPL	QD
Crowne Plaza	\$2249	1225	985	875
Marriott Marquis	2375	1295	995	NA
Sheraton NY	2095	1175	945	855

Other hotels are available - see page 5

**ABOUT SHOPPERS WEEKENDS IN NYC:** Thanksgiving to December 31 is the city's busiest time. New York is aglow with the sights and sounds of the Holiday Season. Our packages are available over this period, but space is limited. Extra nights and additional features can be added; rates quoted at time of booking.



## THANKSGIVING IN NYC

**Plan 3R - Arrive November 24, 2010**

- **STAY:** 3 Nights
- **HOTEL:** Crowne Plaza Times Square, Marriott Marquis, or Sheraton New York
- **FEATURES:** The Rockettes Christmas Show at Radio City Music Hall

- **RATES PP:**

	SGL	DBL	TPL	QD
Crowne Plaza	\$2249	1225	985	875
Marriott Marquis	1995	1125	895	NA
Sheraton NY	2095	1175	945	855

Other hotels are available - see page 5

## ABOUT THE MACY'S THANKSGIVING DAY PARADE:

For over 80 years, this parade has kicked off the holiday season with glorious bands, gigantic balloons and colorful floats. Grandstand seating is not available. The Marriott and Crowne Plaza are on Broadway Avenue, right by the parade route, where you can enjoy the parade from the sidewalk. The Sheraton is on the parade route on 7th Avenue. Extra nights and additional features can be added; rates quoted at time of booking. Let this be the year your family joins in on the fun.



## CHERRY BLOSSOM FESTIVAL - Washington DC

**Plan 3D - Arrive April 8, 2010**

- **STAY:** 3 Nights
- **HOTEL:** Holiday Inn Capitol
- **FEATURES:** Reserved ticket to the National Cherry Blossom Festival Parade, Two-day Gray Line Hop-on/Hop-off Open Top Coach Tour, with stops at all major national monuments and memorials, plus the Federal Triangle area

- **RATES PP:**

	SGL	DBL	TPL	QD
Holiday Inn Capitol	\$1255	675	555	485

**ADDITIONAL FEATURES:** Add dining; we offer four excellent restaurants: 1789, Phillips Flagship Seafood, Old Ebbitt Grill, and Clyde's of Georgetown; rates on request.

**ABOUT THE PARADE:** The National Cherry Blossom Parade begins at 10am on Saturday, April 10, and proceeds along Constitution Ave. from 16th Street to 7th Street. It features bands, floats, balloons and other entertainment. Reserved seats are on Constitution Avenue, close to the hotel.

# SPECIAL EVENT PACKAGES



## COUNTRY MUSIC FESTIVAL

**Plan 5A - Arrive June 9, 2010**

- **STAY:** 5 Nights
- **HOTEL:** Opryland Hotel - Traditional-style room
- **FEATURES:** 4 day shuttle to and from the Festival, 4 day CMA Festival ticket including: "VAULT" Concert Stage at LP Field (top stars for 4 nights), Daily concerts at Riverfront Park, Chevy Music Stage (music and interactive displays), Meet the Stars (autographs and photos), Fun Zone (exhibits and giveaways), Family

Zone (wholesome fun, arts & crafts), Parade and Block Party (rockin' downtown party), Souvenir program and lapel pin PLUS Ticket to the Grand Ole Opry, Admission to Country Music Hall of Fame, Self-guided tour of Ryman Auditorium, Admission to Wildhorse Saloon, Delta Flatboat ride at Delta Atrium at the hotel

RATES PP:	SGL	DBL	TPL	QD
<b>Opryland Hotel</b>	\$1359	835	679	499

**ABOUT THE COUNTRY MUSIC FESTIVAL:** Experience more than 70 hours of live music performances and celebrities - all at country music's biggest annual party! Performers to be announced at a later date.



## ELVIS WEEK IN MEMPHIS

**Plan 5A - August 10-16, 2010**

- **STAY:** 5 Nights
  - **HOTEL:** Crowne Plaza, Holiday Inn Select
  - **FEATURES:** Our packages displayed on page 16 will be in effect over these dates. Pricing is based on 3 night package price plus 2 extra nights.
  - **RATES PP:**
- |                           | SGL   | DBL | TPL | QD  |
|---------------------------|-------|-----|-----|-----|
| <b>Crowne Plaza</b>       | \$899 | 519 | 429 | 419 |
| <b>Holiday Inn Select</b> | 949   | 549 | 449 | 439 |

the Elvis Premier Week Ticket Package, Elvis Week Fun Package, Ultimate Elvis Tribute Artist Contest VIP Package and the Elvis Celebration Concert VIP Package. Prices will range from \$125 to \$550 per person.

**ABOUT ELVIS WEEK:** Each August, thousands of Elvis fans flood into Memphis to pay homage and to celebrate the singing legend's life and work. The week includes music, dance, sports, social and charitable events in an atmosphere of friendship and camaraderie. Most fans say it feels like a huge family reunion. At Graceland, there is a candle-lit vigil on August 15, the anniversary of the singer's death in 1977.

## U.S. OPEN TENNIS

**Plan 4A: Aug. 29-Sep. 8, 2010**

- **HOTEL:** Crowne Plaza Times Square, Marriott Marquis or Sheraton New York
  - **STAY:** 4 Nights between Aug. 29 and Sep. 8, 2010
  - **FEATURES:** 4 day or night tennis matches
  - **RATES PP:**
- |                         | SGL    | DBL  | TPL  | QD   |
|-------------------------|--------|------|------|------|
| <b>Crowne Plaza</b>     | \$1995 | 1395 | 1295 | 1195 |
| <b>Marriott Marquis</b> | 2195   | 1495 | 1395 | NA   |
| <b>Sheraton NY</b>      | 1995   | 1395 | 1295 | 1195 |

RATES PP:	SGL	DBL	TPL	QD
<b>Crowne Plaza</b>	\$2455	1695	1595	1495
<b>Marriott Marquis</b>	2795	1895	1655	NA
<b>Sheraton NY</b>	2455	1695	1595	1495

**ABOUT THE EVENT:** Packages are based on Upper Promenade seating at Arthur Ashe Stadium. There are two other stadiums and many "outer courts" at the United States Tennis Stadium venue, but Arthur Ashe is where most of the premier matches are held in the early and middle rounds, and it is the site for all Championship Weekend sessions - Mens, Womens and Doubles semi-finals and Finals Sep. 10-12. Upgrade seating to the Loge area at a surcharge. Customize a package if the plans shown here are not exactly what you desire.

**Plan 4B: Championships Sep. 9-13, 2010**

- **STAY:** 4 Nights
- **FEATURES:** 4 final matches

## SPECIAL EVENT INFORMATION

### CITY PACKAGES (HOLIDAY SEASON & CHERRY BLOSSOM PARADE)

**DEPOSIT:** \$200 per person is due within seven days of booking, \$100 of which is non-refundable.

**FULL PAYMENT:** is due 60 days before arrival date or immediately if booking is made inside 60 days.

**CANCELLATION:** Fees will apply once deposit or full payment has been received. If cancelled up to and including the 30th day before arrival, a \$100 per person fee applies; 29 to 11 days before arrival, \$150 per person; within 10 days of arrival, or if client is a "no-show," the Extra Night rate per person plus \$150 per person applies. Fee may apply for show cancellations, equal to the cost of the ticket plus brokerage fees, within 10 days of arrival. See Trip Protection Plan on back page.

### ROSE PARADE/ROSE BOWL PACKAGES

**DEPOSIT:** A deposit of \$200 per person is due within seven days of booking (\$100 of which is non-refundable) to ensure definite reservations.

**FULL PAYMENT:** is due by October 15. For bookings after October 15, reservation will be confirmed on receipt of immediate full payment.

**CANCELLATION FEES:** Cancellations before October 15 will result in a \$100.00 per person fee; between October 15 and November 30 a \$200 per person fee applies; after November 30, or if customer is a "no show," will result in forfeiture of complete package price. See Trip Protection Plan on back page.

**DOCUMENTS AND EVENT TICKETS:** Rose Parade/Bowl and Super Bowl tickets are presented to guests by City Escapes staff at the hotel. Tickets for all other event packages will be included in the document packet we

send to your travel agent (by overnight mail) 3 to 10 days before arrival or will be delivered to your hotel by our local representative. City Escapes contracts with reliable sources 11 months before event. Allotments are based on anticipated usage and may become sold out; in this case, based on market conditions, for bookings made within 6 weeks of event, a surcharge may apply to purchase additional tickets. Rates for upgraded tickets available on request. Cancelled event tickets may not be refundable.

### KENTUCKY DERBY, SUPER BOWL, BOWL GAMES, INDY 500, DAYTONA 500, U.S. OPEN TENNIS, AND ALL OTHER SPORTS EVENTS

**DEPOSIT:** A non-refundable deposit of \$200.00 per person is due within seven days of booking to ensure definite reservation.

**FULL PAYMENT:** Balance due by 90 days before arrival date or immediately if booking is made inside 90 days of arrival. (EXCEPTION: Kentucky Derby Final Payment - 1/25)

**CANCELLATION FEES:** \$400.00 per person if cancelled between 60 and 89 days of arrival; full package price is forfeited if cancelled within 59 days of arrival, or if client is a "no show." See Trip Protection Plan on back page.

### MARDI GRAS AND ALL FESTIVALS

**DEPOSIT:** A non-refundable deposit of \$200 per person is due within seven days of booking to secure definite reservations.

**FULL PAYMENT:** Due 90 days before arrival date, or immediately if booking is made within 90 days of arrival.

**CANCELLATION FEES:** \$200 per person if cancelled between 60 and 89 days before arrival; full package price will be forfeited if cancelled within 59 days of arrival, or if client is a "no show." See Trip Protection Plan on back page.

## THESE POLICIES APPLY TO BOTH CITY AND SPECIAL EVENT PACKAGES BUT SEE PAGE 23 FOR ALL SPECIAL EVENT PACKAGE PAYMENT, CANCELLATION AND DOCUMENT INFORMATION

### **PAYMENT FOR CITY PACKAGES (INCLUDING HOLIDAY SEASON & CHERRY BLOSSOM PARADE)**

**DEPOSIT:** \$200 per person is due within seven days of booking, \$100 of which is non-refundable.

**FULL PAYMENT:** is due 60 days before arrival date or immediately if booking is made inside 60 days.

**CANCELLATION:** Fees will apply once deposit or full payment has been received. If cancelled up to and including the 30th day before arrival, a \$100 per person fee applies; 29 to 11 days before arrival, \$150 per person; within 10 days of arrival, or if client is a "no-show," the Extra Night rate per person plus \$150 per person applies. Show cancellations are generally non-refundable. In most cases, especially with popular shows, theatres may impose fees, or full cost of ticket, regardless of when the cancellation occurs. We will advise theatres' policy, if requested, at time of booking. See Trip Protection Plan in next column.

**FORM OF PAYMENT:** Travel agency checks, Visa, Mastercard, Discover or American Express. MCOs and Tour Orders are not accepted.

**RATES:** Brochure rates represent cash discount pricing; full rate applies to credit card sales. Rates are subject to change without notice. Prices include tax, ticket brokerage fees where applicable, planning costs.

**NOT INCLUDED IN PRICE:** Airfare, portorage at hotel, meals not shown in package inclusions, any items of a personal nature, parking at hotel, rollaway charges.

**LATE BOOKINGS:** A nominal fee will apply to process booking and express mail documents for reservations taken within 21 days of arrival.

**DOCUMENTS:** Will be sent to your travel agent 21 days before arrival (see page 23 for Special Events). Document reissue will result in a fee of \$20 per person.

**FEATURES:** All package inclusions, including sightseeing and days of operation are subject to change. Changes will be advised at time of booking. Substitution features of equal value will be made if necessary. If shows become unavailable, other shows will be substituted.

**SHOW TICKETS:** Based on best available seats at time of booking. Nominal surcharges may apply for some shows due to ticket price differences and increases in ticket costs and fees. See important information inside this brochure for shows in New York, Branson and Nashville. Shows and event tickets that customers cancel may not be refundable.

**REFUNDS:** Requests must be in writing, and may take 30 days to research. Due to certain vendor restrictions, (hotels, sightseeing companies, ticket sources) we cannot guarantee refund will be granted.

**RESPONSIBILITY:** City Escape Holidays' responsibility and liability does not extend to personal injury, property damage or acts of negligence or omission related to any vendor providing services on the offered City Package or Special Events plans.

**UNUSED FEATURES:** Unused features, vouchers, admission tickets, show tickets or other package inclusions cannot be refunded.

**ROOM CONFIGURATION AND ROLLAWAY CHARGES:** All prices are based on the existing bedding in the room. Rollaway charges are not the responsibility of City Escape Holidays; customers should take care of these charges directly with the hotel front desk.

**ROOM ALLOCATION:** When City Escape Holiday's room allocations are sold out, often we have the opportunity to secure additional rooms, but they may be at a higher rate, based on the hotel's capacity pricing policy. If this is the case, we will advise your travel agent at time of booking.

**HOTEL CHECK-IN/CHECK-OUT:** Generally check-in is no earlier than 3:00pm and check-out by 12 noon. This is the policy of the hotels, not City Escapes.

**CHANGES:** For each change made after the original booking, a fee of \$15 (\$25 for Special Events) per person will apply. Cancellation policy is outlined above for each package type. Please note that the Trip Protection Plan does not cover changes.

**RETURNED CHECKS:** Are subject to a \$35 service charge.

**TRAVEL AGENT RESPONSIBILITY:** Your travel agent is responsible for going over all documents with you and explaining their use and conditions.

**GROUPS:** All group requests will be quoted based on desired inclusions and can be completely customized.

**TRIP PROTECTION PLAN:** Our travel insurance is provided by Travel Guard. It covers Trip Interruption, Travel Delay (\$100 maximum per day), Baggage and Travel Documents (\$250), Baggage Delay (\$50), Medical Expense (\$1,000), Emergency Medical Transportation (\$20,000), Accidental Death & Dismemberment (\$10,000) plus Travel Guard Assistance. Pre-existing medical condition exclusion waived if insurance is purchased within 24 hours of initial trip payment. Insurance may be purchased no later than final trip payment date without waiver of pre-existing medical conditions. Premium is based on total package price, per person. Rates are quoted at time of booking and rate sheet will be faxed to your travel agent on request.

### **BOOKING PROCEDURES FOR TRAVEL AGENTS:**

Our office will be closed Friday of Thanksgiving weekend, December 31 and the afternoon of Good Friday.

Contact our Vacation and Special Events Reservations Center:

City Escape Holidays, 13470 Washington Blvd, #101,  
Marina del Rey, CA 90292

Reservations Phone: 800-222-0022 or Fax: 310-827-5575

Hours: 8:00am to 5:00pm, Monday-Friday PST

PACKAGES ARE AVAILABLE FOR GROUPS OR INDIVIDUALS

City Escape Holidays is registered as a Seller of Travel in California under registration number CA#2060639-40.

Travel Agents Brochure RQ Fax: 310-827-5553



[www.cityescapes.com](http://www.cityescapes.com)

[www.specialeventpackages.com](http://www.specialeventpackages.com)

**See This Travel Agency Today for Expert Planning**