

NEW YORK

Your Tour Package Includes the Following Number of Selections from Each Activity Group. Please see page 5 for all package rates.

PLAN	HOTEL NIGHTS	# OF SELECTIONS FROM ACTIVITY GROUPS					STAGE DELI	EFF. DATES
		I	II	III	IV	V		
2A	2 nights hotel & tax	1	0	0	0	0	0	1/1-12/31
2B	2 nights hotel & tax	0	0	0	0	1	0	1/1-12/31
3A	3 nights hotel & tax	0	1	1	0	1	0	1/1-12/31
3B	3 nights hotel & tax	0	0	0	0	2	0	1/1-12/31
3C	3 nights hotel & tax	0	0	1	1	1	1	1/1-12/31
3D	3 nights hotel & tax	1	1	0	1	1	1	1/1-12/31
3S	3 nights hotel & tax	0	1	0	0	0	0	1/1-12/31
4A	4 nights hotel & tax	0	1	2	1	1	1	1/1-12/31
4B	4 nights hotel & tax	0	0	0	0	3	0	1/1-12/31
4C	4 nights hotel & tax	0	0	1	0	2	1	1/1-12/31
4D	4 nights hotel & tax	1	1	1	4	1	1	1/1-12/31
5A	5 nights hotel & tax	1	1	2	3	2	0	1/1-12/31
5B	5 nights hotel & tax	0	0	0	0	4	0	1/1-12/31
6A	6 nights hotel & tax	1	1	3	1	3	1	1/1-12/31
7A	7 nights hotel & tax	1	1	4	2	4	1	1/1-12/31
7B	7 nights hotel & tax	0	1	3	0	5	1	1/1-12/31

FEATURES ACTIVITY GROUPS

GROUP I - SIGHTS

- Uptown Loop
- Downtown Loop
- Night Loop
- Sightseeing Cruise
- Sunset Lights Cruise
- Holiday Lights Tour
- Woodbury Shopping Outlet

GROUP II - SIGHTS

- All Loops Hop-on/Hop-off Tour

#AL - (2 days) See loops in Group I

Group II Add-Ons

- #AL Tour + Statue of Liberty, Ellis Island (\$16) = ALS Tour
- #AL Tour + Statue of Liberty, Ellis Island, Empire State Building (\$35) = ENS Tour
- Three-day Hop-on/Hop-off Tour + your choice of 3 sightseeing attractions (\$40) = FSNY3 Tour

PLEASE SEE PAGE 6 FOR ALL SIGHTSEEING DESCRIPTIONS

GROUP III - DINNERS

- Ristorante Domenico
- Sardi's
- The View (atop Marriott)
- Gallagher's Steakhouse

GROUP IV - CULTURE

- Metropolitan Museum of Art
- Guggenheim Museum
- Museum of Natural History
- Lincoln Center
- Museum of Modern Art

GROUP V - ENTERTAINMENT

- Broadway Show - Guaranteed Orchestra or Front Mezzanine (See page 7 for list of shows)
- Rockettes Christmas Spectacular
- Yankees Baseball Game
- New York City Opera

ROUNDRIP AIRPORT TRANSFERS PER PERSON:

JFK - \$40 Newark - \$40 LaGuardia - \$36

OPTIONAL SIGHTSEEING

Requires advance reservations at time of booking.

Niagara Falls by Air #NF: Adult or Child \$429. Daily, all year. (A fee will be charged if cancelled less than 8 days prior to tour date.)

Manhattan Comprehensive with Lunch #MC: Adult \$89 Child \$65. Can be used to upgrade Group II Sightseeing. Add \$50 Adult/\$35 Child. Daily, all year.

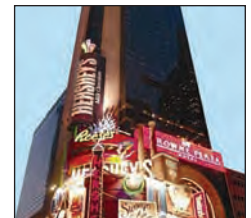
Show Biz Insiders Tour #SI: Adult or Child \$69. Can be used to upgrade Group II Sightseeing. Add \$30 Adult or Child. Tue, Thu, Fri and Sat all year.

Three Nights "Simply Sights" 3 Nights Hotel and tax, plus:

PLAN 3S Our Simply Sights three nighter is for those who only want hotel accommodations and a 2-day Hop-on/off tour of New York City, leaving time for personal activities. See page 5 for prices and see page 6 for Sightseeing Tour descriptions.

YANKEES BASEBALL

See your favorite team play the Yankees in their new stadium. Game tickets may be added to any plan.



CROWNE PLAZA TIMES SQUARE



EDISON



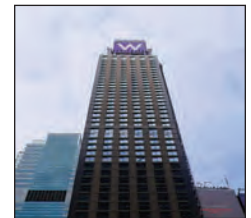
MARRIOTT MARQUIS



SHERATON NEW YORK



STAYBRIDGE SUITES



W TIMES SQUARE



WELLINGTON



WESTIN TIMES SQUARE

Visit www.cityescapes.com for hotel descriptions

RATES PER PERSON		DATES and SEASON		2 NTS - 2A			2 NTS - 2B			3 NTS - 3S			OTHER 3 NTS			4 NTS			5 NTS			6 NTS			7 NTS			EXTRA NIGHTS		
HOTEL	CODE	SGL	DBL	TPL	SGL	DBL	TPL	SGL	DBL	TPL	SGL	DBL	TPL	SGL	DBL	TPL	SGL	DBL	TPL	SGL	DBL	TPL	SGL	DBL	TPL	SGL	DBL	TPL		
CROWNE PLAZA TIMES SQUARE	1/2-3/31, 7/1-9/6	L	699	425	375	849	575	525	1029	609	535	1389	969	895	1889	1325	1225	2399	1689	1565	3019	2165	2015	3659	2659	2485	288	144	115	
	4/1-6/30, 12/21-12/28	M	829	495	419	979	645	569	1219	709	595	1579	1069	955	2139	1455	1305	2709	1849	1665	3389	2355	2135	4089	2879	2625	348	174	136	
	9/7-12/20	H	895	535	445	1045	685	595	1315	765	635	1675	1125	995	2265	1525	1355	2865	1935	1725	3575	2455	2205	4299	2995	2705	376	188	147	
EDISON	1/2-3/31, 7/1-9/6	L	665	399	345	815	549	495	979	579	495	1339	939	855	1825	1289	1175	2319	1649	1505	2925	2119	1945	3549	2609	2405	274	137	107	
	4/1-6/30, 12/21-12/28	M	689	419	359	839	569	509	1019	599	515	1379	959	875	1879	1315	1199	2389	1679	1535	3009	2155	1979	3649	2649	2445	288	144	111	
	9/7-12/20	H	735	455	375	885	605	525	1085	639	535	1445	999	895	1965	1365	1225	2495	1739	1565	3135	2225	2015	3795	2729	2485	308	154	116	
MARRIOTT MARQUIS	1/2-3/31, 7/1-9/6	L	829	495	409	979	645	559	1219	709	585	1579	1069	945	2139	1455	1289	2709	1849	1645	3389	2355	2109	4089	2879	2595	348	174	132	
	4/1-6/30, 12/21-12/28	M	895	519	435	1045	669	585	1315	749	619	1675	1109	979	2265	1509	1335	2865	1919	1699	3575	2439	2175	4299	2979	2669	376	188	142	
	9/7-12/20	H	1129	645	509	1279	795	659	1659	935	729	2019	1295	1089	2719	1755	1479	3429	2225	1879	4249	2799	2389	5089	3395	2919	490	245	180	
SHERATON NEW YORK	1/2-3/31, 7/1-9/6	L	735	445	385	885	595	535	1075	635	545	1435	995	905	1945	1355	1235	2465	1725	1575	3095	2205	2025	3745	2705	2495	298	149	120	
	4/1-6/30, 12/21-12/28	M	769	469	399	919	619	549	1129	669	565	1489	1029	925	2019	1399	1259	2559	1779	1605	3209	2269	2059	3879	2779	2535	320	160	124	
	9/7-12/20	H	915	549	455	1065	699	605	1345	785	645	1705	1145	1005	2305	1555	1365	2915	1975	1735	3635	2499	2215	4375	3045	2715	390	195	150	
STAYBRIDGE SUITES	1/2-3/31, 7/1-9/6	L	645	379	345	795	529	495	929	545	495	1289	899	855	1745	1235	1175	2209	1579	1499	2785	2035	1935	3379	2509	2395	244	122	105	
	4/1-6/30, 12/21-12/28	M	735	445	389	885	595	539	1075	635	555	1435	995	915	1945	1355	1249	2465	1725	1595	3095	2205	2049	3745	2705	2525	298	149	122	
	9/7-12/20	H	829	495	425	979	645	575	1219	709	605	1579	1069	965	2139	1455	1315	2709	1849	1675	3389	2355	2145	4089	2879	2635	348	174	138	
W HOTEL TIMES SQUARE	1/2-3/31, 7/1-9/6	L	799	485	409	949	635	559	1169	689	579	1529	1049	939	2069	1425	1279	2619	1809	1629	3279	2305	2089	3959	2819	2569	328	164	130	
	4/1-6/30, 12/21-12/28	M	829	495	419	979	645	569	1215	709	595	1575	1069	955	2135	1455	1305	2705	1849	1665	3385	2355	2135	4085	2879	2625	346	173	136	
	9/7-12/20	H	1099	639	515	1249	789	665	1615	919	735	1975	1279	1095	2665	1729	1485	3365	2189	1885	4175	2759	2395	4999	3349	2925	476	238	178	
WELLINGTON	1/2-3/31, 7/1-9/6	L	699	425	385	849	575	535	1029	609	555	1389	969	915	1889	1325	1255	2399	1689	1599	3019	2165	2059	3659	2659	2535	288	144	125	
	4/1-6/30, 12/21-12/28	M	759	459	399	909	609	549	1119	659	575	1479	1019	935	2009	1389	1285	2549	1769	1645	3199	2259	2115	3869	2769	2605	320	160	136	
	9/7-12/20	H	829	495	435	979	645	585	1219	709	625	1579	1069	985	2139	1455	1345	2709	1849	1715	3389	2355	2195	4089	2879	2695	348	174	146	
WESTIN TIMES SQUARE	1/2-3/31, 7/1-9/6	L	829	495	419	979	645	569	1215	709	595	1575	1069	955	2135	1455	1305	2705	1846	1665	3385	2355	2135	4085	2879	2625	346	173	136	
	4/1-6/30, 12/21-12/28	M	855	509	429	1005	659	579	1255	729	609	1615	1089	969	2185	1479	1319	2765	1879	1679	3455	2389	2149	4165	2919	2639	360	180	140	
	9/7-12/20	H	1075	625	499	1225	775	649	1575	895	715	1935	1255	1075	2605	1695	1459	3285	2145	1855	4075	2705	2359	4885	3285	2885	460	230	173	

Season Codes: L=Low, M=Mid, H=High. Children under these ages are free in same room with parents: Crowne Plaza, Marriott, Sheraton, Westin and W Hotels 18; Staybridge Suites 12, Edison and Wellington - No Family Plans. Rates for children's features quoted at booking. Rate surcharges will apply over Special Event periods, including the United Nations General Assembly in late September, NYC Marathon in early November, and Holiday Season: Thanksgiving, Shoppers Weekends in early December and New Year's Eve.

IMPORTANT INFORMATION

- **CHILDREN RATES** - See above for ages at which children are free in room with parents in existing beds. Children's Features Rates will be quoted at time of booking.
- **CHRISTMAS SHOPPER'S SEASON** - Thanksgiving to December 31 is New York's busiest time. New York is aglow with the sights and sounds of the Holiday Season. Our packages are available over this period, but space is limited and Holiday Season surcharges apply. Prices and availability will be quoted at time of booking. See page 6 for Holiday Season Packages.
- **HOTEL CHECK-IN/CHECK-OUT** - Generally check-in is no earlier than 3:00pm and check-out by 12 noon. This is the policy of the hotels, not City Escape Holidays and may differ from hotel to hotel.

- **FEATURE SELECTIONS** - Selections from our multiple choice vouchers may be made after arrival, with the exception of shows and optional add-ons, which you must select at time of booking.
- **SHOW CANCELLATIONS/THEATRE POLICIES** - Show cancellations are generally non-refundable. In most cases, especially with popular shows, theatres may impose fees, or full cost of ticket, regardless of when the cancellation occurs. We will advise theatres' policy, if requested, at time of booking.
- **EXTRA FEATURES** - Any item listed in the Features Groups can be purchased as Add-ons. Prices quoted at time of booking.
- **GROUP PACKAGES** - Your travel agent can book your group or organization on any of our packages. We can plan group activity functions, or prepare independent documents, so that each group member (or couple) can "do their own thing" after arrival; great for pre/post-cruise groups.

- **ROOM ALLOCATIONS** - When City Escape Holiday's room allocations are sold out, often we secure additional rooms, but they may be at a higher rate, based on the hotel's capacity pricing policy. If this is the case, we will advise your travel agent at time of booking. Rates for suite accommodations are available on request at all hotels.
- **ROLLAWAYS** - Cost for rollaways is not included in package rates. We suggest customers take care of this with the hotel directly.
- **SIGHTSEEING WITH GRAY LINE** - See page 6 for descriptions of all sightseeing tours. All tours can be purchased as optional add-ons if not included in your package.

Gray Line New York Sightseeing



Uptown Loop. Hop-on/Hop-off: Stops include: Central Park, Lincoln Center, Theater District, Rockefeller Plaza, Radio City, Fifth Avenue, American Museum of Natural History, Cathedral of St. John the Divine, Apollo Theater, Harlem neighborhoods, Metropolitan Museum of Art, Guggenheim and other cultural points of Museum Mile.

Downtown Loop. Hop-on/Hop-off: Stops include: Empire State Building, Greenwich Village, SoHo, Little Italy, Chinatown, Ground Zero, Financial District, Battery Park (departure point for Statue of Liberty & Ellis Island), South Street Seaport, Times Square, Rockefeller Plaza, Radio City, United Nations, Fifth Avenue and more.

Harlem Gospel Tour (Sundays): Travel through a rich and diverse Harlem. See the famous Harlem Theater and attend an authentic church service.

Night Loop: NOT Hop-on/hop-off. Sightings include: Times Square, Empire State Building, Greenwich Village, SoHo, Chinatown and Little Italy, See the glittering lights of the "City that never sleeps." Includes a stop in Brooklyn for a great view of Manhattan.

Manhattan Comprehensive (#MC): The most complete tour of New York City, this 8-hour excursion covers Uptown, Downtown, Greenwich Village, SoHo, Little Italy, Central Park, Mid-Manhattan, Fifth Ave., Rockefeller Center, a boat ride around the Statue of Liberty & Ellis Island. Includes lunch and admissions.

Holiday Lights Tour: From November 23 to January 6 only. NOT Hop-on/hop-off. Similar to the Night Loop, but features animated window displays and holiday decorations at New York's famous department stores, plus the giant tree at Rockefeller Center and other unique holiday sights.

Woodbury Shopping Outlets: Unescorted. Includes roundtrip transportation to Woodbury's Premium Outlets and a VIP Coupon Booklet for additional discounts. Woodbury is designed in a village motif with indoor stores and restaurants, shuttle trolley and 220 designer stores.

All Loops (#AL): Hop-on/Hop-off. Offers the best sights in Manhattan with Hop-on/hop-off service at over 50 stops and connecting transfer points to switch from one tour loop to another. Combines the Uptown Loop, Downtown Loop and Night Loop.

All Loops Statue of Liberty (#ALS): Includes All Loops, plus a boat ride to the Statue of Liberty and Ellis Island. Boat ride departs from Battery Park at the south tip of Manhattan every 20 minutes between 9:00am and 3:45pm in season; less frequently in winter. Plan on four hours to visit Statue and Ellis Island.

Classic New York (#ENS): Includes All Loops, Statue of Liberty/Ellis Island, PLUS admission to the Empire State Building Observation Deck or Top of the Rock.

Freestyle New York (#FSNY3): Includes All Loops Tour for three days plus choice of any three of the following: Statue of Liberty & Ellis Island, Empire State Building Observation Deck, World Trade Center Visitor Center, Top of the Rock, South Street Seaport Museum, 90-minute cruise, New York Skyride, Radio City Music Hall Tour, Museum of Natural History, Museum of the American Indian, Intrepid Sea, Air and Space Museum, and Madison Square Garden Tour.

Holiday Season Packages



THANKSGIVING PARADE

Plan 3R - Arrive November 24

■ **STAY:** 3 Nights
 ■ **HOTEL:** Marriott Marquis, Crowne Plaza Times Square or Sheraton New York
 ■ **FEATURES:** The Rockettes Christmas Show
ABOUT THE MACY'S THANKSGIVING DAY PARADE: This is one of the very best family events available anywhere...and the best part is that it is free! This year's new route has the Parade marching down 7th Ave, instead of Broadway, but this is still right by our three hotels. Grandstand seating is not available. The Marriott and Crowne Plaza are on Broadway Avenue, a half-block from the parade route, where you can enjoy the parade from the sidewalk. The Sheraton is on 7th Avenue. Extra night rates quoted at time of booking.

EXTRA ACTIVITIES: Add dinners, sightseeing tours, additional shows and museum admissions; rates on request.

■ RATES PER PERSON				
HOTEL:	SGL	DBL	TPL	QD
Crowne Plaza	\$2249	1225	985	875
Marriott Marquis	1995	1125	895	NA
Sheraton New York	2095	1175	945	855



SHOPPERS WEEKENDS

Plan 3R - Arrive December 2 or 9

■ **STAY:** 3 Nights
 ■ **HOTEL:** Marriott Marquis, Crowne Plaza Times Square or Sheraton New York
 ■ **FEATURES:** The Rockettes Christmas Show
ABOUT SHOPPERS WEEKENDS: The period between Thanksgiving and the middle of December is one of the most special times to be in New York! The city embraces the holiday spirit in spectacular fashion, starting with the Macy's Thanksgiving Day Parade. The following week marks the lighting of the giant tree in Rockefeller Center. Then comes the first two weekends in December known as Shoppers Weekends, where both visitors and locals are out in force taking care of that Christmas list.

EXTRA ACTIVITIES: Add dinners, sightseeing tours, additional shows and museum admissions; rates on request.

■ RATES PER PERSON				
HOTEL:	SGL	DBL	TPL	QD
Crowne Plaza	\$2249	1225	985	875
Marriott Marquis	2375	1295	995	NA
Sheraton New York	2095	1175	945	855



NEW YEAR'S EVE

Plan 3R - Arrive December 30

■ **STAY:** 3 Nights
 ■ **HOTEL:** Marriott Marquis, Crowne Plaza Times Square or Sheraton New York
 ■ **FEATURES:** One Broadway Show
ABOUT THE EVENT: This is truly something you have got to see, up close and personal, a once in a lifetime experience! Our hotels are located in the heart of Times Square in the "Greatest City in the World." You literally walk out of all three hotels and into Times Square. Being in the heart of it all, you will be able to find a great position from which to watch the famous New Year's Ball drop, in the second leading up to midnight and the ringing in of the New Year!

EXTRA ACTIVITIES: Add dinners, sightseeing tours, additional shows and museum admissions; rates on request.

■ RATES PER PERSON				
HOTEL:	SGL	DBL	TPL	QD
Crowne Plaza	\$2449	1365	1095	975
Marriott Marquis	2435	1355	1055	NA
Sheraton New York	2155	1235	995	915

CURRENT BROADWAY SHOWS

TOP BROADWAY SHOWS

SHOWS MUST BE SELECTED AT TIME OF BOOKING

This is a partial list of shows we offer. Shows may close without notice. Packages include best available seating at time of booking, but are guaranteed to be Orchestra or Front Mezzanine! Evening or matinee performances. Nominal surcharges may apply for some shows due to price differences and increases. Off-Broadway is also available. Please visit www.cityscapes.com for current show list.

9 to 5 • Avenue Q • Fela! • Chicago • Rock of Ages • Billy Elliot
 Spider-Man: Turn Off the Dark • Hair • La Cage aux Folles
 Shrek the Musical • The Royal Family • In the Heights • Race
 Jersey Boys • Mamma Mia! • Mary Poppins • Superior Donuts
 Wintuk • Burn The Floor • South Pacific • Next to Normal
 After Miss Julie • Oleana • Collected Stories • The Lion King
 God of Carnage • The Little Mermaid • Ragtime • Memphis
 Broadway Bound • Present Laughter • Wishful Drinking
 Brighton Beach Memoirs • Time Stands Still • The 39 Steps

